

UNIFIED TRANSPORTATION PLANNING

WORK PROGRAM

FY 2011

June 10, 2010

**Rhode Island Department of Administration
Division of Planning
STATEWIDE PLANNING PROGRAM
One Capitol Hill
Providence, RI 02908-5870**

PREFACE

Each year, the Statewide Planning Program prepares a work program for the coming fiscal year. The purposes are to identify planning activities that address issues facing the state, and to organize the staff and funding needed to conduct these activities. The program serves as a basis for federal planning grant applications.

The work program is reviewed by the State Planning Council. On June 10, 2010 the Council approved this Work Program as the Unified Planning Work Program for transportation planning pursuant to federal regulations.

This Work Program addresses those tasks anticipated to be funded by federal transportation agencies and others that comprise a comprehensive, and continuing planning process. It accounts for the activities of both the Statewide Planning and Strategic Planning and Economic Development units of the Division of Planning. The document includes an introduction, with a discussion of the context for statewide planning; a discussion of performance over the previous year; a description of the work tasks and activities that are proposed for the state fiscal year beginning July 1, 2010; and presentation of the staff and financial resources required to carry out these tasks.

The Work Program was prepared by Jared Rhodes, Chief, and Paul Capotosto, Principal Planner, working under the supervision of Kevin Flynn, Associate Director. Additional input was provided by the Statewide Planning Program unit supervisors and staff, listed in Part Four. Mr. Robert Shawver and Ms. Diane Badorek of the R.I. Department of Transportation, and Mr. Mark Therrien and Ms. Harriet Holbrook of the R.I. Public Transit Authority provided assistance relative to the work tasks of their respective agencies for the unified program (See Appendix).

The program is tentative, pending decisions on state appropriations, federal grants, and other matters. Consequently, adjustments will be made from time to time as these decisions are made.

TABLE OF CONTENTS

Preface----- i

Table of Contents ----- ii

Part One: Introduction

Mission of the Statewide Planning Program----- 1-1
Organization----- 1-1
The Context for Planning----- 1-2

Part Two: FY 2010 Performance

Transportation Initiatives----- 2-1
Land Use Initiatives----- 2-5
Economic Development / Strategic Planning Initiatives ----- 2-8
Consistency Review and Planning Assistance----- 2-8
Planning Information and Resources Initiatives----- 2-11
Support to Other Agencies ----- 3-14
Management and Administration----- 2-16

Part Three: FY 2011 Work Tasks

Transportation Initiatives----- 3-2
Land Use Initiatives----- 3-6
Economic Development / Strategic Planning Initiatives ----- 3-10
Consistency Review and Planning Assistance----- 3-10
Planning Information and Resources Initiatives----- 3-12
Support to Other Agencies ----- 3-15
Management and Administration----- 3-16

Part Four: Resources

Sources of Funds ----- 4-1
Staff ----- 4-1
Funding by Task ----- 4-2

APPENDIX

I. RIDOT Planning Tasks ----- A-1
II. RIPTA Planning Tasks----- A-5
III. US DOT Approval----- A-9

PART ONE: INTRODUCTION

Mission of the Statewide Planning Program

The Statewide Planning Program, Department of Administration, is charged with preparing and maintaining plans for the physical, economic, and social development of the state; encouraging their implementation; and coordinating the actions of state, local, and federal agencies and private individuals within the framework of the state's development goals and policies. This basic charge is established by Sections 42-11-10 and 12 of the *General Laws*.

Further responsibilities are specified by other statutes. For example, planning consistency reviews are required for Economic Development Corporation projects, energy facility siting, solid waste facility siting, and local comprehensive plans. The agency serves on numerous boards and commissions. Federal law also assigns roles to the Program. The State Planning Council is designated as the single, statewide Metropolitan Planning Organization for transportation planning and as the Comprehensive Economic Development Strategy Committee for economic development planning.

Organization

Statewide Planning is one of three subprograms of the Division of Planning which also includes the Offices of Housing and Community Development and Strategic Planning and Economic Development (see Figure 1). The Office of Local Government Assistance, which was also a subprogram of the Division, was relocated to the Department of Revenue during FY 2010. Strategic Planning and Economic Development is responsible for long-range economic development planning, short term implementation of the State's Comprehensive Economic Development Strategy (CEDS) and is intended to be involved in all major interest areas using policy analysis and the planning process to prepare issue briefs and strategic plans that address current topics of special interest. The Office of Housing and Community Development provides staff support to the programs of the Housing Resources Commission and administers the Small Cities Community Development Block Grant Program.

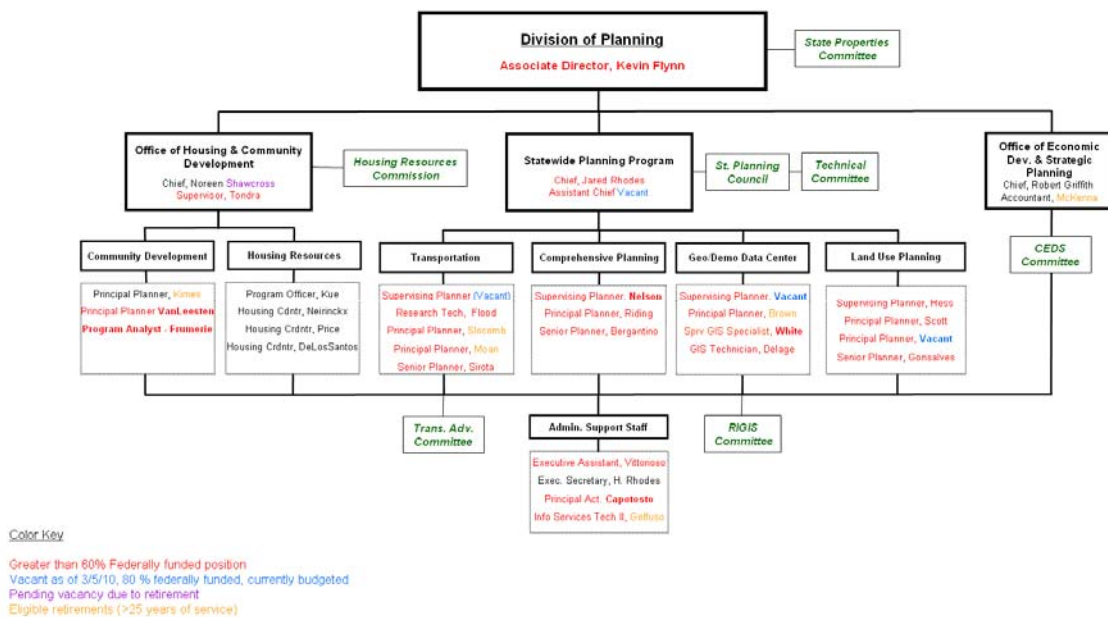
The Statewide Planning Program is comprised of the State Planning Council, its advisory committees, and the staff within the Department of Administration. The Director of Administration chairs the Council, and the staff chief serves as secretary.

The State Planning Council is comprised of the Governor's representative, four state officials (one from the Department of Transportation and three from the Department of Administration), the Chair of the Housing Resources Commission, the President and the Executive Director of the League of Cities and Towns, four local officials, a representative of a community development organization, two environmental advocates and three public members. The Federal Highway Administration, Division Administrator also serves as an advisory member. The Council adopts all elements of the State Guide Plan, advises the Governor on planning matters, and is required to approve or comment on numerous project and program proposals.

A permanent advisory committee (the Technical Committee) is created by statute. The Council appoints special committees as required to assist it in its work.

The Statewide Planning staff is part of the Department of Administration and reports to the Associate Director of Planning. The planning staff is organized into five units. These include the Transportation Section, Land Use Section, Consistency Review and Comprehensive Planning Section, Demographic and Geographic Data Center and the Administrative Support Staff.

Figure 1. – DOA, Division of Planning Organizational Chart



The Context for Planning

Governmental structure

State planning in Rhode Island is shaped by the relatively simple government structure. Two levels of government operate here -- state and local. The local level consists of 39 cities and towns and one Indian tribe (in addition to special-purpose units such as water and fire districts). County, regional or metropolitan government does not exist.

As a result, the state planning office has functions that, elsewhere in the country, would be spread among state, regional, county, and metropolitan planning agencies. Intergovernmental coordination within the state involves only the cities and towns.

The State Guide Plan

A State Guide Plan, a multi-document, framework level plan providing state policy guidance in a variety of functional areas, has been steadily built up and maintained over the past three decades. Presently, the Guide Plan consists of 29 elements addressing broad concerns, such as land use, transportation, housing, economic development, water supply, recreation and open space; as well as more specialized topics, such as forest resources, and drought management. Recent updates and additions have included housing, land use, solid waste management, transportation, and outdoor recreation and conservation. The Guide Plan provides some degree of permanent policy direction for the state's future development.

Land use planning

Physical development planning centers on land use planning. Rhode Island adopted land use plans in 1975 and 1989, which dealt with issues of urban growth. 1988 legislation required local comprehensive plans to be prepared and adopted by municipalities and approved by the State. Since then, the state's emphasis has been on reviewing and approving local plans and updates and on providing modern growth management tools for local government. Enabling acts for zoning and land development/subdivision review were passed in the early 1990s.

In 2006, the State Planning Council adopted the third State Land Use Policies and Plan in 30 years, *Land Use: 2025*. The major conclusion of *Land Use: 2025* is that, despite earlier plans and subsequent revisions to local planning and land management enabling statutes, Rhode Island is consuming land for development at an unsustainable rate. Data presented in the updated Plan indicate that in the 25-year period between 1975 and 2000, the portion of Rhode Island's land area in developed uses increased by more than 62,000 acres, or by 43 percent, while state's population increased by only five percent in this 25-year period. This rate of land conversion appears extraordinary and unsustainable in a historical context: it took 330+ years to develop the first 20 percent of the state's land, and then *within a mere 25 years*, another 9 percent of the state was converted to developed uses.

Growth has been decidedly uneven, geographically --- some towns in the western and southern rural parts of Rhode Island witnessed increases of more than 40 percent, threatening their capacity to provide services, protect resources, and preserve a sense of community. Meanwhile, until most recently, the state's older cities experienced population loss, eroding tax bases, and increasing costs for public services. While growth since 2000 has seen a resurgence of population and investment in the state's urban centers, demographic (income) differentials and service costs remain as policy concerns.

A broad-based coalition, Grow Smart Rhode Island, has been working since the late 1990s to address suburban sprawl. Successes include an aggressive state tax credit for historic restoration/reuse projects (which has since been repealed), a streamlined building code for rehabilitation projects, a training program for local land use officials, and passage of the new state land use plan. Statewide Planning is participating in the effort and will continue to work with Grow Smart and local planners on growth issues and to support implementation of the recommendations of the *Land Use 2025*. An implementation challenge is to retain favorable State tax incentives and to align State investment decisions to optimally support growth and development in areas recommended in the plan.

Transportation planning

Capital investments in transportation are among the state's largest -- the state's transport system is critical to economic development, and residents depend on it. Transportation affects air quality, public health and the natural environment, and is affected by and contributes to land use patterns. For these reasons, it is an important focus of Statewide Planning.

In addition, Rhode Island's transportation investment consists mainly of the federal-aid program (matched with state bonds), and federal law requires that it be supported by planning. The State Planning Council is designated as the single, statewide Metropolitan Planning Organization for transportation planning. The basic requirements are to prepare a long-range (20-year) transportation plan, to approve a short-range Transportation Improvement Program (TIP) supporting the long-range plan, and to maintain a continuing transportation planning process, with broad public involvement.

The current federal transportation authorization act — the Safe-Accountable Flexible Efficient Transportation – A Legacy for Users Act-- was adopted by Congress in 2005. This Act continues the basic continuous planning and programming requirements for metropolitan areas and states, but allows plan and program updates on a four year cycle. The American Recovery and Reinvestment Act of 2009 has increased federal funds available for transportation purposes but, overall, federal and state resources continue to fall short of addressing the state's long-term surface transportation needs. Priority investment needs for diversification of the transportation system must compete with the need to maintain functionality and service of current assets, and an overriding need to meet debt service obligations. Operations funding, generally not supported by federal programs, remains both an acute and long-term concern, especially for transit. While Rhode Island has responded by employing some innovative financing techniques, resource concerns have become acute.

Recent Surface Transportation Plans have retained a “Fix It First” focus on the serviceability and enhancement of current assets. While attempting to address the most pressing transportation issues the planning process also strives to insure that limited resources are distributed equitably amongst socioeconomic groups. The current (2008) edition of this State Guide Plan element also established travel corridors as a basis for examination of transportation system needs, via engaging local and regional officials and the public in developing comprehensive solutions to circulation and mobility issues. Engaging regional organizations, non-profit groups, and cities and towns in locally-sponsored transportation planning via corridor and planning challenge pass-through grants is one approach Statewide Planning is pursuing to support implementation of collaborative solutions to transportation and land use issues. Similarly, the Program’s coordination of the federal Safe Routes to School Program offers opportunities to work directly with communities on projects to enhance safety and promote Smart Growth concepts such as walkable neighborhoods.

Planning for a high capacity, focused, public transit system that is fully integrated with future land use objectives is a continuing planning focus. Strengthening and focusing existing transit operations while leveraging new revenue sources to expand and integrate services will be the next planning challenge for those concerned with the state’s transport sector.

Housing Planning

The housing affordability crisis has focused attention on land management measures to facilitate the provision of an adequate supply of safe and affordable housing. The 2004 *Comprehensive Housing Production and Rehabilitation Act* required a number of communities to prepare and adopt affordable housing plans, as part of their local comprehensive plans, identifying strategies that the communities will employ to accommodate low and moderate-income housing. These 29 plans were reviewed as part of the local comprehensive planning process and approved by the State as consistent with other major Guide Plan elements such as land use and transportation. In 2006 the State Planning Council also adopted a five-year strategic plan for promoting housing production and improving housing affordability. The Program provides technical assistance to municipalities to facilitate implementation of local plans, including GIS-based mapping identifying areas of the state suitable for higher density development and those facing the highest foreclosure rates.

Economic development strategy

Rhode Island's unemployment rate continues to be one of the highest in the country, and the current economic downturn threatens to impact gains made over past years. Manufacturing employment, while still slightly higher than the national average, has been replaced by services as the major employment sector. Rhode Island is adjusting to this "new economy" by initiating programs to improve the state's business climate and competitive position.

Long-range economic development planning contributes to these strategies by ensuring that physical and programmatic elements are in place to spur economic growth. The State Guide Plan's Economic Policies and Plan and Industrial Land Use Plan are used to measure current and planned programs against long-term needs and policies, and as the base to develop annual priority lists of infrastructure projects for federal economic development assistance. This planning capacity also assists in the implementation of strategies for industry clusters and assisting local officials in making their economies disaster resistant. As Rhode Island’s designated Comprehensive Economic Development Strategy Committee, the State Planning Council is positioned to promote coordination between state, regional, and local economic initiatives, and to advance consistency of economic development projects with other functional concerns addressed in the State Guide Plan. State-supported economic development projects, for example, are reviewed for conformance to the Guide Plan.

Water Supply Planning

The increasing demand for water, coupled with an approaching limited availability and continuing threats to water quality, has made the planning and management of water resources a priority. Statewide Planning has no dedicated staff capacity for water supply planning, but its Land Use staff does work cooperatively with other state agencies having mandated planning and management roles for water supply and water resource protection. State Guide Plan Elements 721 through 724 provide a policy framework for water resource planning to ensure that there will be a water supply adequate to support existing uses and future growth. Review of water supply system management plans prepared by major suppliers, and local comprehensive plans prepared by municipalities with applicable Guide Plan policies provides coordination and implementation consistency. Water quantity and quality issues also have to be examined within water supply management plans and local comprehensive plans as Rhode Island embraces a new century of water management featuring an ethic of efficient water use and balanced land uses that are able to sustain the region's economy, culture, and environment.

Local Comprehensive Plans

Under the 1988 *Comprehensive Planning and Land Use Regulation Act*, Statewide Planning is responsible for the initial approval of local comprehensive plans as well as amendments and updates. This requires close coordination with both the communities and state agencies that comment upon these plans. The required five-year updates have become more important as the remaining few communities received their initial approval. With 20 years of experience under the Act, and the adoption of major new State Guide Plan elements for land use, the time is opportune for re-focusing of the local comprehensive planning process to ensure that its outcomes optimally support the objectives of the legislation, and help implement the State Guide Plan. Staff also provides limited training and technical assistance to community boards and commissions. As more communities attempt to address growth pressures, the need for this type of assistance increases. In this regard, the Program continues to participate in and support the land use training collaborative organized by Grow Smart RI for local decision-makers.

Planning Implementation via Challenge Grants

The successful implementation of the vast majority of the State Guide Plan's recommendations is highly dependant upon the actions of other entities, in particular, operating state agencies, that deliver program and projects influencing development, and local governments, that control land use decisions shaping the state's built environment. While Rhode Island's State-local planning system has made great strides in insuring consistency between goals and policies at the state and municipal levels; there remains concerns over the actual progress made in *implementing* the policies established in the various plans. Often, plans are not fully implemented due to a lack of resources or available expertise needed to translate a general recommendation of a systems or comprehensive plan into a focused project applying policies to a particular problem area or real-world situation.

To help address this need, in 2006, the Program began its Planning Challenge Grant Initiative to pass through some of the federal metropolitan transportation planning funds received by the Program. In 2006-2007, approximately \$500,000 was granted, via a competitive process, to nine local and regional planning projects to advance implementation of the new State Land Use Policies and Plan (*Land Use: 2025*) and Surface Transportation Plan (*Transportation: 2025*). Project sponsors, who provide the matching funding, included municipal governments, regional planning organizations, and non-profit groups. Projects ranging from corridor, access management, and commuter rail feasibility studies to land use-transportation training programs for local officials are now completed. A second grant round, in 2007-2008, awarded approximately \$360,000 to nine projects. A third grant round, in 2009-2010 awarded approximately \$1,000,000 to another 18 projects.

Planning databases

A fundamental activity of statewide planning is to maintain a socioeconomic database that can be used as a common basis for all kinds of planning, by the public and private sectors. Projections are prepared for population, employment, and other key factors in the state's development. Census data and an extensive housing database are maintained. The Program also manages the State Data Center, which distributes the latest Census information to a system of state affiliates.

A geographic database is also essential for both physical and social planning. The Rhode Island Geographic Information System (RIGIS) has one of the most extensive statewide databases in the country, with over 100 datasets covering natural resources, demographics, infrastructure, and other information. This information is augmented by the addition of historical aerial photography in digital format.

PART TWO: FY 2010 PERFORMANCE

The following documents the Program's performance in advancing the work tasks of the previous year.

The discussion proceeds in similar format to last year's proposed work tasks and attempts to cover each sub-task on a point by point basis. It provides bulleted summaries of notable achievements and or impediments experienced in advancing the planned tasks.

As with last year, it is necessary to point out that performance over the current reporting period has also been hindered by ongoing staffing vacancies. As of this writing, four out of the Program's 18 professional planning positions, or 22% percent, remained vacant for the majority of FY 2010.

Performance measures for the coming year are covered under Section Three to limit content redundancy. In both instances performance measures focus on major products and benchmarks and do not address routine agency activities.

Transportation Initiatives

Task 1010 - Continuing Transportation Planning Process

- Conducted seven (7) meetings of the Metropolitan Planning Organization's Transportation Advisory committee (TAC).
- Engaged the Central Massachusetts Regional Planning Commission through the Blackstone Valley Partnership to address regional transportation concerns (see task 1060 for additional detail).
- Completed annual ECHO Recertification for the Federal Transit Administration.
- Began MOBILE/MOVES air quality modeling transition with State Agency Coordination Team.
- The RI statewide travel demand model was updated to run the latest version of TransCAD transportation planning software.
- In August, a collaborative effort was initiated by Statewide Planning and RIDEM to formally submit our Air Quality Conformity process as set forth in RI State Planning Council Rule VIII to EPA for their approval.
- Reviewed URI Transportation Center research and education grant proposals.
- Invited the RI congressional delegation to the August TAC meeting in an effort to orchestrate a roundtable discussion on the possible extension or reauthorization of SAFETEA-LU and to get their perspectives on a new bill. Unfortunately, the invitation was declined by all delegates.
- Lead staff member for freight planning activities completed the NHI web based course Number 139006 *Integrating Freight in the Transportation Planning Process*.
- Hosted FHWA's Office of Freight Management and Operations monthly Talking Freight webinars. Also hosted and attended the Freight Summit webinars, the ARRA and TIGER stimulus package webinars, and the AASHTO and FHWA Climate Change webinar series.
- Attended Statewide Student Transportation System meetings as a member of it's Transportation Advisory Committee.
- Attended Strategic Highway Safety Program meetings to prepare for an enhancement of the State's Strategic Highway Safety Plan.
- Successfully completed the 2009 quadrennial certification by FHWA and FTA.

- Expanded membership of the TAC to include a representative of the Rhode Island Airport Corporation and an advocate for the disabled.

Task 1020 - Surface Transportation Plan

- State Guide Plan Element (SGPE) 651 *Waterborne Passenger Transportation Plan*:
 - ✓ Drafted scope of work to update SGPE 651 into Transportation 2030 and converted the document to electronic Word format for editing purposes.
 - ✓ Data collection completed to inventory existing passenger operations and facilities. Researched past and future ferry financing programs. Efforts included review and incorporation of CRMC's Special Area Management Plans and the RI Ports and Harbors Challenge Grant Study.
 - ✓ Drafted updated SGPE 651 goals, policies, objectives, actions and corresponding water transit map for review by Steering Committee.
 - ✓ Updated materials are planned to be presented to the Steering Committee, TAC, Technical Committee and SPC in June.
- State Guide Plan Element (SGPE) 661 *Freight Rail Plan*:
 - ✓ Updated pertinent goals, policies, objectives and actions from the 1993 SGPE 661 Freight Rail Plan for integration into *Transportation 2030*.
 - ✓ Refocused SGPE 661 update to reflect requirements of PRIIA. Widened scope of work to include freight and rail planning and expanded advisory committee to include broader representation of rail interests statewide. Final product will be a State Rail Plan as outlined in PRIIA.
 - ✓ Reviewed annual National Transportation Atlas GIS Database, 2008 and 2009.
 - ✓ Developed a section on potential re-use of rail right-of-ways based on existing and potential bike path locations from RIDOT.
 - ✓ Researched changes in state laws impacting railroads, including language relative to Amtrak, liabilities and commuter rail operations south of Providence.
 - ✓ Updated and expanded historical information on existing and abandoned rail lines and developed data source sheets.
 - ✓ Updated and expanded passenger operator information to include operations and passenger counts.
 - ✓ Coordinated with RIDOT on the State Rail Plan initiative through bi-weekly working group meetings.
- Processed one (1) amendment to the State's Long Range Transportation Plan, Transportation 2030 to include a feasibility study for the proposed Pawtucket commuter rail station.

Task 1030 - Transportation Improvement Program

- Processed four amendments to FY 2009 – 2012 Transportation Improvement Program.
- Project Status Reports were provided to the TAC in May by RIPTA and RIDOT.
- Scheduled an initial planning meeting with RIPTA, RIDOT and the Chair of the TAC to discuss a strategy for the next update of the TIP.

Task 1040 - Transit Planning

- Continued to support Metro Area Transit Study. Hosted a presentation of the Metro Area Transit Study's recommendations by the RIPTA Assistant General Manager at a TAC meeting.
- Investigating ability to transfer \$100,000 in FTA transit funds from Statewide Planning to RIPTA for further implementation of study results.
- Submitted quarterly progress and financial reports as part of closing out FTA Metropolitan Planning Grant Section 5303, RI-80-0002 for FY2010.
- Commenced application for FY2011 Metropolitan Planning Grant Section 5303.
- Attended and contributed to meetings of the Accessible Transportation Advisory Committee, Transit 2020 Working Group, RIPTA Strategic Planning Committee and the State Rehabilitation Council's Transportation Consortium.
- Two (2) staff members completed the FTA workshop on Coordinated Mobility held in Providence.
- Served as a member of the panel to select projects for funding under the Job Access/Reverse Commute Program.

Task 1050 - Airport Planning

- Update of the State Airport Systems Plan was placed on hold. The current draft relies heavily on the projections and assessment that have been produced as part of the FAA EIS process for runway extension at TF Green State airport. Over the course of the fiscal year FAA acknowledged that these need updating. As such work on the State Airport Systems Plan will resume, at RIAC's initiation, once FAA completes their updates.
- Staff participated in the development of the North Central State Airport Layout Master Plan by attending Advisory Group meetings, public meetings, and reviewing analysis of locations for taxiway, apron space, terminal building, hangar locations, SRE building alternatives, fuel farm locations, auto parking and access locations, RW approach systems, non-aeronautical development alternatives, and airport security and perimeter fencing.
- Participated in the development of the Newport State Airport/Colonel Robert F. Wood Airpark Environmental Assessment (EA) by attending EA Advisory Group meetings and reviewing environmental inventories, alternative analyses and other relevant data.

Task 1060 - Corridor Planning

- Statewide Planning continues to serve on the Aquidneck Island Corridor Study Steering Committee. Staff attended and participated in Committee meetings, public informational workshops and reviewed data and assumptions used in plan development.
- The Program expanded its corridor planning activities by engaging in the budding Blackstone Valley initiative. Initial contributions included completion of a transportation Strengths Weaknesses, Opportunities and Threats (SWOT) analysis for the transportation planning charette held in July to identify and prioritize opportunities for regional transportation collaboration and advocacy. Other activities included monthly meetings, Mayoral forums and working group meetings. In addition, this group offers an opportunity for collaboration and cooperation with the Central Massachusetts Regional Planning Commission, who is a member of the Blackstone Valley Partnership.

Task 1070 - Safe Routes to School Program (SRTS)

- Continued implementation of the first round of SRTS grants. First round cooperative agreements have been executed, with the exception of West Warwick. Written requests to execute the West Warwick cooperative agreement have not been responded to and as such the SRTS Coordinator has initiated rescission of the award. Evaluated quarterly narrative reports submitted by local SRTS programs to ensure that terms of agreements are being fulfilled. Met and communicated regularly with local SRTS program leads, RIDOT, FHWA and SRTS National Center staff regarding program implementation and status. Processed round one invoices and maintained records.
- Attended the Annual SRTS meeting and conference in Portland, Oregon.
- Initiated the second grant round. Reviewed and updated application materials and outreach strategy with input from the SRTS Steering Committee. Distributed a Request for Proposals and conducted two public workshops during the solicitation period. Received 24 applications from 15 municipalities requesting over \$4.6 million in funding. Applications have since been reviewed and scored. Awards announcements scheduled to occur prior to the start of the 2011 fiscal year.
- Coordinated with RIDOT on methods for streamlining the SRTS Infrastructure Project process. RIDOT is in the process of procuring consultant services for project design for use by future SRTS applicants.

Task 1080 - Global and Other Transportation Activities

- Development of a Technical Paper on sea level rise's potential impact on transportation infrastructure was not advanced beyond the initial sea level rise inundation mapping that was completed for Transportation 2030 since the required elevation data is still forthcoming.
- Contributed to and participated in RIDOT's two day retreat/workshop on climate change and greenhouse gas reduction. Primary contribution included a presentation on current content of the State Surface Transportation Plan relative to greenhouse gas emission and vehicle miles traveled reductions.
- The development of a comprehensive Geographic Information Systems (GIS) based inventory of marine commercial/industrial uses and transportation infrastructure associated with the Rhode Island Ports and Harbors has been completed. The project's Advisory Committee is currently working to complete the final report.
- The MPO continued to coordinate with URI's Transportation Center and served on the Center's Executive Board in order to advance and fund research needs identified in the State's Surface Transportation Plan. The 2009 Challenge Grant Initiative call for proposals was also focused on these needs and distributed through the Center's network.
- Staff continued working through the Incident Management Task Force to assess the inclusion of intelligent transportation systems (ITS) in intermodal applications and plans and to provide input to development and refinement of state's ITS architecture.
- Reconstituted the Congestion Management Task Force, which will now meet on a quarterly basis to implement the State's Congestion Management Process as outlined in Transportation 2030.
- Initiated planning and research with RIDOT into new performance based management measures for congestion management.
- Continued to assess various projects, plans, and environmental documents for consistency with transportation elements of the State Guide Plan (see tasks 4020 and 4030 for further detail).
- Coordinated with RIDOT on updating the highway functional classification database with the latest RIDOT roads coverage via a GIS server database connection, allowing for functional classification

report listings and maps by city and town to be continuously updated with the latest RIDOT roads coverage and any future revisions.

- Processed one request for amendment of the state's highway functional classification system, which was subsequently approved by FHWA.
- Led the work of the State Employee Commuter Task Force as established by the General Assembly to reduce vehicle miles traveled and single occupancy trips by state employees. Cooperated with RIPTA to assess baseline commuting data. Researched several state and local commuter incentive programs nationwide and engaged several state departments and union representatives in the process of choosing feasible options and incentives for implementation in Rhode Island.
- Collaborated with a communications professor from URI to develop a proposal to establish a replicable pilot program at URI to reduce single occupancy vehicle trips. This proposal was presented by to the URI Transportation Center for funding.

Land Use Initiatives

Task 2010 - Transfer of Development Rights Initiatives

- Researched Transfer of Development Rights (TRD) initiatives regionally and nationwide. Based on the wealth of documentation found to be available it was decided that the preparation of an additional written guidance would not be an efficient use of resources.
- TDR efforts have been refocused to build on the North Kingstown Challenge Grant success by developing an educational outreach strategy, furthering municipal implementation and by establishing a model for inter-municipal or regional TDR programs.
- Due to the Program' continuing staffing limitations, TDR implementation efforts have since been channeled to the Washington County Regional Planning Council through the award of a Challenge Grant.
- The Council is currently working to develop a TDR education and outreach strategy as well as assessing the feasibility of establishing an inter-municipal TDR program in Rhode Island. Program staff is participating in the project organizational meetings and providing technical advice

Task 2020 - Village and Growth Center Initiatives

- Researched national village and growth center initiatives to identify a potential model for establishing an official Rhode Island designation process.
- Initiated assessment of existing village centers to determine common characteristics and needs.
- Participated in a Growsmart RI' focus group regarding the financing of mixed use centers and the integration of *Land Use 2025* into municipal comprehensive plans and other projects.
- The work otherwise planned for this task has not been initiated due to the Program's continuing staffing limitations.

Task 2030 - Water Supply Planning

- Efforts to consolidate the *Water Supply Policies*, *Water Supply Plan the Emergency Water Management Plan*, *the Drought Management Plan*, and the *Scituate Reservoir Management Plan* into a singular State Guide Plan Elements continued. To date a schedule of work has been completed, the contents of existing plans have been summarized and other regional and national examples have been

identified. The Advisory Committee has met 7 times and produced a new vision statement, goals and policies, and drafted Parts 1 and 2 of the Plan. Part 3 is currently being drafted.

- The MPO's Associate Director continues to represent the Director of Administration on the Water Resources Board and has attended 4 of its meetings over the reporting period. Ongoing technical support continues to be provided to the Board. Specific advice was provided on *Land Use 2025* infrastructure and affordable housing policies for state property dispositions and future land acquisitions of the Board. Staff has reviewed 1 Water Supply System Management Plan for State Guide Plan (SGP) consistency and attended 7 Water Allocation Subcommittee meetings.
- The Program has also: continued the ongoing review of National Drought Center weekly hydro reports & drought status conditions; provided technical assistance in the drafting of a Memorandum of Understanding (MOU) for interagency coordinated review of water withdrawal permits and reviewed 2 wetland well applications for the Department of Environmental Management (DEM) under the provisions of the MOU.
- Provided technical planning support and participated in regular meetings of the RI Water Works Association.
- Staff participated in 2 EPA Watershed Academy climate change policy webcasts concerning water resources and potable water resource management policies.

Task 2040 - Watershed Planning

- Efforts to update State Guide Plan Element 715, the Narragansett Bay Comprehensive Conservation and Management Plan and integrate it with the Bays Rivers and Watersheds System Level Plan into a singular State Guide Plan Element began with the Program drafting and facilitating the signing of an MOU amongst the parties involved.
- The MOU codifies the mutual desire to work toward an integrated plan, establishes a foundation for its format, defines the roles and responsibilities of the parties in moving forward and establishes a Working Group and Advisory Committee to guide the effort.
- To date, 9 meetings of the working group have been held. A work schedule and a public outreach strategy have been produced. Program staff took the lead in drafting the Land & Use and Development chapter. A full draft Integrated Plan is being compiled by the Narragansett Bay Estuary Program and public outreach efforts are being scheduled to solicit stakeholder input.
- Participated in 3 quarterly meetings of the Bay Rivers and Watershed Coordinating Team. The Chair of the MPO, who also serves as the Associate Director of the Division of Planning, continues to represent the Director of the Department of Administration on the Coordination Team.
- The Program continues to support and provide technical assistance to the RI Rivers Council. Staff has attended 4 meetings of the Council and updates their web page as necessary.

Task 2050 - Energy Planning

- Efforts to update the RI Energy Plan have been initiated and a work plan completed.
- An Advisory Committee of key individuals and stakeholders has been assembled and has met on four occasions.
- Current State Guide Plan elements have been reviewed and pertinent goals and policies that need to be reflected in the update identified. Research has been initiated to update relevant regional and national energy trends and needs.

- Staff has incorporated suggestions from the Committee into a draft which integrates content of the RI Green Buildings Act, the RI ARRA Energy Plan and the Governor's Renewable Energy Plan.
- Production of RI renewable energy case studies are underway.
- Staff also participated in reviewing proposals that DEM has received for the development of onshore wind turbines on state owned lands. The focus of staff participation in these reviews was in ensuring consistency with the State Guide Plan including both Land Use 2025 as well as the Surface Transportation Plan.

Task 2060 - Recreation, Conservation and Open Space Planning

- With the update of *Ocean State Outdoors: Rhode Island's Comprehensive Outdoor Recreation Plan* completed in June of 2009, the Program's efforts over the past year have focused on provide guidance in its implementation. This has been accomplished in part by participation on various State commissions, councils, and committees that are involved either directly or indirectly (through the provision of funds) in outdoor recreation or the conservation of land. These entities include the Agricultural Land Preservation Commission, Natural Heritage Preservation Commission, Recreation Resources Review Committee and the RI Trails Advisory Committee.

Task 2070 - Solid Waste Management Initiatives

- The Rhode Island Resource Recovery Corporation Board of Commissions has not been reformulated as of yet and therefore the planned work has not been initiated.

Task 2080 - Other Land Use Planning Activities

- Assessed various projects, plans, proposed legislation, and documents for consistency with pertinent elements of the State Guide Plan. Reviewed Department of Transportation Land Sales Advisory Committee applications for SGP consistency. Reviewed 7 applications for 2010 CEDS funding. Reviewed 2 Wastewater Treatment Facility Plans and two applications to the State Clean Water Revolving Loan Fund at the request of DEM. Reviewed 3 Clean Water Infrastructure Plans and 1 application to the State Drinking Water Revolving Loan Fund at the request of DOH. Reviewed 2 municipal harbor management plans at the request of CRMC. Scanned General Assembly proposed 2010 legislation and provided input on proposed legislative changes to land use, water supply, and energy related bills. Conducted 29 various SGP consistency reviews in association with local comprehensive plan (9 reviews) and intergovernmental review submittals (20 reviews) (see tasks 4020 and 4030 for further detail).
- The Land Use Implementation Committee remained focused on completing the Comprehensive Planning Assessment Report and accompanying proposed legislative amendments. As such further work to prioritize funding for projects located within the Urban Services Boundary or appropriate village and or growth centers has not been initiated.
- Worked with Grow Smart Rhode Island and the RI Chapter of the American Planning Association to refine the ongoing educational program and monthly brown bag luncheon series. Reviewed and contributed to the "Making Good Land Use Decisions" session plan and participated in mock workshop designed to test the revised content and format. Attended 2 brown bag sessions regarding wetland buffers and updating of the comprehensive planning act.
- Planned work to update the 2001 Composite Municipal Future Land Use Map was not initiated due to staffing limitations.
- Provided technical planning support to other agencies including participation in regular meetings of the RI Rural Development Council, the RI Historic Preservation and Heritage Commission, the RI

Resource Conservation & Development Council, the RI Chapter of the American Planning Association, and the State Conservation Committee.

- Staff attended the RI Flood Mitigation Association 2010 conference, the RI League of Cities & Towns annual conference, and the Growsmart RI 2010 Power of Place Summit.
- Continued to provide technical support to DEM efforts to update the RI Storm Water Manual and develop a new guidance manual on Low Impact Development (LID) principles.
- Provided technical support to DEM in its effort to update State Guide Plan Element 161, Forest Resources Management Plan. Assisted with stakeholder survey design and mapping of forest legacy areas.
- Provided technical support to the RI Agricultural Partnership in development of a state strategic plan for agriculture. Assisted with RFP and consultant selection. Attended 2 Advisory Committee meetings and assisted with the design of listening sessions for farmers.
- Wrote Geographic Information Systems (GIS) metadata for *Land Use 2025* future land use map and assisted the RIGIS Coordinator with publication of the digital data through the RIGIS website.
- Provided daily news headlines from local, regional and statewide newspapers of interest to staff.

Economic Development / Strategic Planning Initiatives

Task 3010 - Economic Development Policies and Plan

- Continued to revise and update the Economic Development Policies and Plan Element of the State Guide Plan.

Task 3020 - Comprehensive Economic Development Strategy Administration

- Completed a multi-year Update of the State's Comprehensive Economic Development Strategy (CEDS).
- Conducted the annual CEDS solicitation of proposals. Seven proposals were received, reviewed, scored and recommended for the FFY 2011 Project Priority List (PPL).
- Prepared and submitted the request for annual Planning Assistance grant to the EDA's Philadelphia Regional Office on March 16, 2010.
- Served on Steering Committee of Rhode Island Center for Nursing Excellence (RICNE) an EDA funded University Center dedicated to leveraging the resources of higher education in the state to support economic development, job creation and partnership between industry and higher education.

Task 3030 - Strategic Planning and Other Policy Initiatives

- Solicited requests for State Agency Performance Measures for inclusion in the Governor's FY 2011 budget request. Received, evaluated, and published 260 Program Performance Measures from 33 State Agencies.

Consistency Review and Planning Assistance

Task 4010 - State Guide Plan Maintenance

- The State Guide Plan Overview was updated and is now available on our website.

- The structure and presentation of the State Guide Plan has been assessed and recommendations to improve its effectiveness, usability, and implementation have been included in the *Rhode Island Comprehensive Community Planning System Assessment and Recommendations Report*. The report and recommendations have been endorsed by the Land Use 2025 Implementation Advisory Committee, the Technical Committee, and the State Planning Council.
- Efforts to update State Guide Plan Element 110: Goals and Policies continue. The effort was slowed by the loss of anticipated intern support. Progress to date includes development of a draft set of topical categories to be covered by this Element and preliminary cataloging of pertinent goals, policies and objectives found in the General Laws. Next major steps include formulation of specific draft goals, objectives, and policies and state agency review of the preliminary draft.

Task 4020 - Comprehensive Planning Program

- Staff continues to administer the State Comprehensive Planning and Land Use Regulation Program.
- The Program has worked through the following reviews of local comprehensive plans to embed state goals into local policy; to facilitate the resolution of identified concerns and to better coordinate development patterns at the local level:
 - ✓ Town of Little Compton Five Year Update – Staff worked with the Town and RI Resource Recovery to resolve concerns relative to solid waste management and recycling rates. Revisions were subsequently made to the plan and it received State approval on June 10, 2009.
 - ✓ Town of Tiverton Five-Year Update – Staff worked with the Town to resolve concerns relative to inconsistencies in future land use density vs. existing development patterns and current zoning. Revisions were subsequently made to the plan and it received State approval on November 16, 2009.
 - ✓ Town of Johnston Comprehensive Plan – Staff worked with the Town to resolve internal inconsistencies relative to definitions of future land use densities. Revisions were subsequently made to the plan and it received State approval on November 17, 2009.
 - ✓ Town of Bristol Five-Year Update – Staff worked with the Town to resolve concerns relative to the plans lack of a true future land use map as well as several other mapping inconsistencies and deficiencies. Revisions were subsequently made to the plan by the Town. State Approval of the revised plan was issued on December 16, 2009.
 - ✓ Town of Barrington Five-Year Update – Staff worked with the Town, RI Housing and the Office of Housing and Community Development to resolve concerns relative to future residential development densities, mapping and affordable housing concerns. Revisions were subsequently made to the plan and it received State approval on January 19, 2010.
 - ✓ The Program is currently in the process of formally reviewing Five-Year Updates from the City of East Providence and the Town of Westerly.
 - ✓ The Program is also currently working with the Town's of Burrillville, Exeter, Hopkinton and West Warwick as well as with the Cities of Woonsocket, Pawtucket to review and provide early feedback on draft Five-Year Updates.
 - ✓ Notification of pending expiration of State Approval of the Local Comprehensive Plan were mailed to ten municipalities: Cumberland, Hopkinton, Middletown, Newport, Scituate, Warwick, Lincoln, Warren, East Greenwich, and West Warwick.
- Several of the key recommendations of the *Rhode Island Comprehensive Community Planning System Assessment and Recommendations Report* required changes to the Comprehensive Planning

and Land Use Regulation Act. Accordingly, the Division, in cooperation with the State Planning Council, the Technical Committee, the Land Use Implementation Committee, and other interested parties, have drafted a comprehensive set of amendments that have been introduced for the General Assembly's consideration.

- The update / replacement of Handbook 16: *Handbook on the Local Comprehensive Plan* has begun. An intern has worked with staff to outline the draft. The preliminary organization of the draft examines the required content of a comprehensive plan from the aspects of 1) where are we now, 2) where to we want do be, and 3) how do we get there? The final product will serve as a "how to" guide for municipalities.
- Improved State agency participation in the comprehensive planning process by routinely copying State agency commentators on the formal findings and recommendations that are submitted to municipalities. Additionally, in instances where State agency concerns have been especially significant, those agencies have been invited to meet with Program staff to discuss the comments that are to be submitted to the municipality under review.
- Staff reached-out to two municipalities that do not currently have State approved community comprehensive plans to identify if opportunities exist to provide targeted assistance in resolving pertinent impediments. One of these communities completed the needed changes to their Plan and received State approval. The other indicated that they intended to undertake a thorough rewrite of the Plan and would engage the Program at the proper time.
- The Division has adopted as standard practice, the posting of State approved municipal Comprehensive Plans on its website in order to facilitate public access.

Task 4030 - Intergovernmental Review Process

- Reviewed 156 federal grant applications, environmental impact statements, and or other actions to ensure consistency with state and local plans. This number includes five Rhode Island Airport Corporation, three Quonset Development Corporation, four Economic Development Corporation and five school construction projects. Six of the remaining 139 applications required EO-123372 reviews.

Task 4040 - Energy Facility Siting Board Review

- The Associate Director, as a member of the Energy Facilities Siting Board, continues to review and participate in public hearings relative to National Grid's RI Reliability project. The RI Reliability Project proposes to relocate two 20 mile long transmission lines and to install a third 345 kv line within the same utility corridor. Otherwise no other formal submittals have been received from the Board for review.

Task 4050 - Local / Legislative Planning Assistance

- Staff completed the updating of the training program "Making Good Land Use Decisions" and participated in a run-through of the revised program.
- Staff participated in the development of a new training module, "Writing Sound Decisions". Staff also participated in a run-through of the program and the drafting of subsequent revisions. The first program was presented on September 29th.
- Monitored the daily introductions of bills in the General Assembly (2020), retrieved bills with planning impact, wrote position papers on a limited number of bills (13), monitored committee schedules on an on-going basis, and testified as needed e. Assisted drafting an appropriate substitute bill on Tolling due to errors in the original submission. Coordinated, as needed with builders,

planners, the League of Cities and Towns, and others on bills. Communicated with municipalities on a number of bills with potential municipal impact.

- Provided quality, technical assistance to citizens, groups, and government agencies on local planning and land use issues as needed.

Task 4060 - Planning Challenge Grant Program

- Continued administrative tasks in completing and closing out planning challenge grants awarded to communities in 2007-08.
- Updated Challenge Grant solicitation materials and issued a 2009-2010 call for proposals. Conducted a public workshop to assist in application preparation. Received 29 proposals requesting over \$1.8 million in funding. Utilized an Advisory Committee of assorted stakeholders to review, score and generate funding recommendations. A total of 18 local and regional planning organizations were awarded a total of \$1 million in funding.
- A mandatory grant recipient workshop was held to review all relevant state and federal requirements applicable to the grant funding.
- 17 grant recipients have signed cooperative agreements to proceed with their projects.
- Staff continues to monitor the progress of all grant recipients and track all required reporting.

Planning Information and Resource Initiatives

Task 5010 - Rhode Island Geographic Information System (RIGIS)

- Supported the Executive Committee in leading the RIGIS effort as mandated by RIGL 42-11-10. Undertook routine administrative tasks associated with the Executive Committee's quarterly meetings including advance meeting notices, agenda definition and distribution, meeting minutes, and speaker identification. Began production of a FY 2010 Annual Report. Identified speaking points for the June 2010 Executive Committee meeting to discuss updating the Executive Committee's Strategic Plan for 2010-2015.
- Ensured that the State's GIS users are maximizing available computer resources by integrating state agency GIS resources into an overall enterprise-wide GIS. Excess server disk space in RIDOT was identified and assigned to be used by RIDOA and RIDEM for geodatabase storage to take advantage of new functionality in the latest version of ESRI software. The next step is for RIDOA and RIDEM to meet with RIDOT to load their data into a shared database along with a regularly updated copy of the RIGIS database at URI.
- Improved web-based GIS capabilities to ease the use of RIGIS data through the ability for users to download GIS data in many different formats or to add map layers pointing to web map services hosted at URI. The RI Digital Atlas (beta version) is complete. Plans were made to further enhance this resource to support municipal Comprehensive Planning efforts by providing downloadable maps that rely solely on RIGIS data layers.
- Continued to support the maintenance and enhancement of the RIGIS database in cooperation with the University of Rhode Island Environmental Data Center (URI-EDC):
 - ✓ The following GIS data layers have been updated - statewide roads, RIPTA bus routes, shellfish prohibition areas, Natural Heritage Areas (Rare Species), wetlands, emergency medical service stations, fire stations, hospitals, law enforcement locations.

- ✓ The following GIS data layers have been added - FEMA FIRM maps for two counties, Spring 2008 aerial photographs, August 2006 Narragansett Bay color orthophotos, FEMA LiDAR data for one county, Spring 2007 RI Army National Guard LiDAR, Spring 2002 USGS true color orthophotos, NOAA worst-case hurricane surge inundation areas, Land Use 2025 data and growth centers, and RI correctional institutions.
- Entered into a 2010 funding agreement with URI-EDC.
- Completed pertinent DOP GIS data products for Land Use 2025 (planned land use, and growth centers). Working to build comprehensive metadata for the completed Potential Sites for High Density Housing Initiative and make it accessible via the RIGIS System. Have not yet begun production of a composite municipal future land use map due to a lack of resources to pursue a project of this size and complexity.
- Provided leadership to state agencies in the coordinated development, dissemination, integration and utilization of GIS data. Examples include tasks associated with the:
 - ✓ Emergency Management Agency's Support Function V (see Task 6020);
 - ✓ Bringing municipal GIS representatives to the table to define a GIS data update methodology for the E-911 system's addressing data;
 - ✓ Trying to identify GIS representation in the Water Resources Board in order to update municipal water distribution infrastructure data;
 - ✓ Ensuring that the work being done by the RIDOT for the Historic Preservation and Heritage Commission's (RIHPHC) National Register data is consistent with RIGIS direction;
 - ✓ Working with the Housing Resources Commission to determine how to ensure that geographic data is entered completely and accurately by inspectors;
 - ✓ Gathering consensus between stakeholders in how to best go about asking for updated municipal GIS parcel mapping and associated assessor databases;
 - ✓ Assisting RIEDC with statewide broadband mapping; and
 - ✓ Validating the accuracy and completeness of ports and harbors GIS data delivered by URI.
- Worked with URI, USFHA, USFTA, TNC and other interested RI funding partners to develop a proposal for a coastal New England LIDAR-based elevation data set to be matched by USGS ARRA funding. The scope of work is currently being finalized by a 6-state Northeastern US consortium and a pre-approved USGS vendor team. Through the USGS' GPSE contracting mechanism, the USGS will provide all project management, quality control and contracting services in exchange for a copy of the completed data products. This new dataset will support transportation, environmental and emergency management planning efforts related to sea level rise, hurricanes, coastal storms, flooding and storm damage. Data acquisition will happen in Fall 2010 with data products coming available in 2011.
- Provided technical assistance to municipalities (East Greenwich, East Providence, and North Providence) in the coordinated development, dissemination, integration and utilization of GIS data. With the help of DOP Comprehensive Planning, developed a standardized set of GIS map layers and symbology to support consistent Comprehensive Plan development efforts. Served as project liaison for Challenge Grant funded efforts to develop municipal parcel data in the Town's of Westerly and Tiverton.
- With the assistance and oversight of a RIGIS Executive Committee working group, we are currently finalizing an appropriate process to request municipal parcel data statewide to support a study assessing the conformance of currently-available municipal parcel data with established RIGIS

standards, and whether these standards need to be updated to more closely match federal standards. This working group will also provide recommendations toward future actions in the development of a seamless statewide parcel database.

- Publicized the availability of GIS assistance via the RIGIS Listserv (RIGIS-L) a new RIGIS blog, and a new RIGIS Twitter account. Provided guidance to state agencies, municipal government, and local schools through liaison efforts and outreach programs to stimulate implementation and the use of geographic information systems in cooperation with the URI EDC. Examples include setting up and holding two meetings for GIS municipal users in Washington county and then Bristol/Newport counties, guest lecturing at a URI GIS class, participating as a volunteer at a groundwater analysis and mapping program at Scituate High School, giving demonstrations of the new RI Digital Atlas at RIGIS User Group and RIGIS Executive Committee meetings, and holding power-user meetings with GIS staff in many RI State agencies.
- Attended conferences (NSGIC, NEURISA, and NEARC), seminars and meetings to better understand how RIGIS can incorporate new technology, applications, and database developments. Renewed and participated in regional chapters of the National States Geographic Information Council (NSGIC) on the Broadband Mapping Subcommittee of the Technical Committee, the Urban and Regional Information Systems Association (URISA) New England Chapter as an At-large Board Member, and the NorthEast ARC (NEARC) GIS user group as NEARC 2010 Conference Committee Chair as a means of expanding professional networks and opportunities.

Task 5020 - Demographic and Socioeconomic Data

- Continued ongoing operations as Lead Agency of the State Data Center, the principal point of contact for census data and census products by state and local government entities, community agencies, business enterprises, educational institutions, and the general public.
- Conducted the annual survey of Group Quarters populations and facilities throughout Rhode Island. A completed report was submitted to the Federal State Cooperative for Population Estimates branch of the U.S. Census Bureau.
- Completed annual requirements for submission of the Boundary and Annexation Survey (BAS) to the Geography division of the U.S. Census Bureau.
- Compiled data for submission of annual Vital Statistics report detailing births and deaths by race and ethnicity, by county. Submitted completed report to the Federal State Cooperative for Population Estimates branch of the U.S. Census Bureau.
- Completed the Verification stage of the Census 2010 Participant Statistical Areas Program (PSAP), which allowed for a review the Census Bureau's MAF/TIGER database to determine if the Census Bureau's Geography Department correctly incorporated proposed changes previously submitted by Statewide Planning as a result of its participation in the PSAP.
- Completed annual State Data Center (SDC) report identifying combined activities of twenty-one member agencies of the State Data Center relating to data dissemination, data analysis, technical assistance, product development and enhancement, and education. Submitted final report to the Customer Liaison and Marketing Services Office of the U.S. Census Bureau.
- Completed a sourcebook presenting demographic, social, economic, and housing information about Rhode Island's elderly population. This sourcebook, titled Rhode Island Aging Profile, has been uploaded to the Census page of Statewide Planning's website as an on-line data resource.

- Continued working to develop city and town monographs identifying the characteristics of populations and housing infrastructure. When completed, the entire set of monographs will be uploaded to Statewide Planning's census website as an on-line data resource.

Task 5030 - Archives Maintenance and Access Provision

- Posted public hearing notices and associated materials for one amendment to the Long Range Transportation Plan and four amendments to the Transportation Improvement Program to the website.
- Posted State Planning Council, Technical Committee, Transportation Advisory Committee, and RIGIS committees' calendars and agendas on the website. Filed same with the Secretary of State's Office in compliance with the provisions of the Public Meetings Act.
- Posted municipal comprehensive plan documents submitted for official review to the Program's website. These included the City of East Providence and the Towns of Barrington, Bristol, Johnston, Tiverton and Westerly,
- Redesigned and updated the 2009 Planning Challenge Grant, Safe Routes to School, Intergovernmental Review and Comprehensive Economic Development Plan web sites.
- Posted Title 6 Policy, 2010 Census information and EDA federal funding opportunity.
- Assisted with approximately 25 public inquires regarding historic aerial photography archives.

Support to Other Agencies

Task 6010 - ARRA Implementation and Administration (ARRA)

- Processed four ARRA related TIP Amendments and one ARRA related amendment to the State's surface Transportation Plan.
- Assisted the Governor's Office of Economic Recovery and Reinvestment with concerns related to solicitation of projects for various funding categories. Worked to develop schedules and timelines for multiple program initiatives. Provided technical assistance and guidance relative to required mapping of ARRA funded projects.
- Program staff assisted the RI Office of Energy in implementation of the AARA energy block grants by presenting at a funding workshop for municipalities and energy service company providers. Content delivered focused on the identifying priority implementation actions of the draft energy plan.
- Developed an accelerated Comprehensive Economic Development Strategy (CEDS) Certification Procedure for use in reviewing proposals for U.S. Economic Development Administration (EDA) ARRA funding. The State Planning Council approved the revision to CEDS rules and procedures and two proposals were certified to apply for EDA/ARRA grants.
- Provided technical support to the Rhode Island Economic Development Corporation in preparing and executing a successful ARRA grant application related to the mapping of broadband service provision within the State.

Task 6020 - State Properties Management

- Program staff chaired over 20 meeting of the State Properties Committee addressing over 200 individual agenda items. Through its service, staff worked to ensure conformance of the Committee's actions with the goals, policies, and actions of the State Guide Plan including the State's long range surface transportation plan, Transportation 2030 and its official land use policies and plan, Land Use 2025.

- Much of the Committee's work over the past year focused specifically on the management, sale, leasing etc. of RI DOT owned properties and transportation rights-of-ways. In addition the Committee regularly deals with similar properties matters of the DEM, DLT, WRB, DOH, RIEMA, DCYF, DHS, DOA and the Board of Governors for Higher Education.

Task 6030 - Housing Program Support

- Assisted RI Housing Resources Commission with review of Building Homes RI Neighborhood Opportunities 2010 grant applications. Reviewed applications for consistency with Transportation 2030, Land Use 2025 and proximity to / within Urban Services Boundary and municipal affordable housing plans. Attended Commission meeting for determination of final project funding.
- Worked with the Office of Housing and Community Development and Rhode Island Housing through the comprehensive plan review process to provide technical assistance to communities in support of implementation of local affordable housing plans.
- Fulfilled requirements established under Section 1616(e) of the Social Security Act (Keys Amendment) for federal FY 2010. The purpose of the statute is to assure the development of standards for safe and appropriate settings as an alternative to institutional living for Supplemental Security Income (SSI) recipients, limit the use of SSI funds for substandard facilities, and publicize the standards and enforcement procedures for these facilities as a means of involving the public in monitoring the standards.

Task 6040 - Community Development Program Support

- Assisted in the operation of the Small Cities Community Development Block Grant (CDBG) program including program reporting mechanisms, CDBG field audits of Bristol and Exeter, invoicing and disbursements in the RIFANS software system, and budgeting.
- Served on the CDBG Application Review Steering Committee. Reviewed and commented on proposals conformance with the State long range transportation and land use plans.
- Provided general administrative support services to the Office of Housing and Community Development.

Task 6050 - RIEMA Planning and Management Support

- Worked with the Rhode Island Emergency Management Agency (RIEMA) to establish how their new webEOC software would directly use RIGIS database layers through the web and the State of Rhode Island's network. Established protocols for ensuring that RIGIS database layers would be regularly updated on their internal firewall-protected servers. Overviewed GIS mapping capabilities in new version of webEOC, and determined that existing RIGIS map services could be leveraged by the new software.
- Supported flood events of March 2010 by working on-site for 2 days and participating in multiple conference calls lead by FEMA.
- Participated in process to update RIEMA's preparedness plan document by attending Emergency Support Function #5 meetings at RIEMA.
- Discussed how RIEMA can take advantage of the State of Rhode Island Enterprise GIS efforts by housing a copy of the RIGIS database and map services so that the EOC can run independently during an emergency. This need was substantiated when a large transformer at URI was disabled during the March 2010 flood bringing down the RIGIS server and internet map services.

- The RIGIS Coordinator took online training and received certificates in Incident Command Systems (levels 100 and 200) in February 2010. Attended instructor-led training in Incident Command Systems (level 300) in Warwick in early March 2010 before flooding events.
- Attended Rhode Island Flood Mitigation Association (RIFMA) annual meeting and gave an overview of the status of the North East LiDAR (NE LiDAR) project which will provide detailed elevation data to support the development of more accurate flood areas in future FEMA flood mapping efforts.
- Provided guidance on how to best update Hurricane Evacuation Zones given the results of updated inundation analysis done by NOAA.

Management and Administration (Task 7010)

- Directed agency activities. Carried out general administrative functions, including work programming, personnel management, weekly staff meetings, time tracking, scheduling and public relations.
- Executed financial oversight including completion of monthly budget reports, federal draw-downs and expenditures.
- Received approval for filling of four vacant positions. Two of which were advertised and scheduled for interviews prior to institution of a still standing hiring freeze.
- Staffed the State Planning Council, Technical Committee and Transportation Advisory Committee. Arranged meetings; prepared agendas, minutes, and meeting materials; and performed other administrative functions.
- Successfully completed the FHWA/FTA Quadrennial Recertification Review.

PART THREE: FY 2011 WORK TASKS / PERFORMANCE MEASURES

The following summarizes the proposed work task titles and tracking numbers for the coming year. Each task is detailed in the subsequent narrative descriptions. The detailed bulleted narrative descriptions also serve as the proposed measures for gauging the Program's performance at the end of the coming year. The proposed work tasks assume that the current vacant Assistant Chief, two Supervising Planner and one Principal Planner positions will be filled and active throughout the calendar. The Programs' ability to advance these tasks will be greatly impaired should these positions not be filled. Tasks listed under the "other" category are utilized for accounting purposes only and are not detailed in the narrative descriptions.

FY 2011 Task List

Transportation Initiatives

- 1010 - Surface Transportation Plan
- 1015 - Transportation Improvement Program
- 1020 - Travel Demand Modeling
- 1025 - Air Quality Conformity Analysis
- 1030 - Transportation Based Climate Change Activities
- 1035 - Congestion Management Task Force
- 1040 - Access Management
- 1045 - State Employee Commuter Task Force
- 1050 - Transit Planning
- 1055 - Airport Planning
- 1060 - Corridor Planning
- 1065 - Safe Routes to School Program
- 1070 - Continuing Transportation Planning Process

Land Use Initiatives

- 2010 - Transfer of Development Rights
- 2020 - Village and Growth Centers
- 2030 - Water Supply Planning
- 2040 - Watershed Planning
- 2050 - Energy Planning
- 2060 - Recreation, Conservation and Open Space Planning
- 2070 - Solid Waste Management Planning
- 2080 - Sustainable Communities Initiatives
- 2090 - Other Land Use Planning Activities

Economic Development / Strategic Planning Initiatives

- 3010 - Economic Development Policies and Plan
- 3020 - CEDS Administration
- 3030 - Strategic Planning & Other Policy Activities

Consistency Review and Planning Assistance

- 4010 - State Guide Plan Maintenance
- 4020 - Comprehensive Planning Program
- 4030 - Intergovernmental Review Process

- 4040 - Energy Facility Siting Board Review
- 4050 - Local / Legislative Planning Assistance
- 4060 - Planning Challenge Grant Program

Planning Information and Resource Initiatives

- 5010 - Rhode Island Geographic Information System
- 5020 - Demographic and Socioeconomic Data
- 5030 - Publications, Archives Maintenance and Access Provision

Support to Other Agencies

- 6010 - ARRA Implementation and Management
- 6020 - State Properties Management
- 6030 - Housing Program Support
- 6040 - Community Development Program Support
- 6050 - RIEMA Planning and Management Support

Management and Administration (7010)

Other

- 8010 - Paid Leave
- 8020 - Central Business Office
- 8030 - FHWA/FTA Air Quality Control
- 8040 - RI Air Quality Control
- 8050 - SRTS Grant Funds
- 8060 - DOIT Cost Allocations

FY 2011 Work Task Descriptions

Transportation Initiatives

Surface Transportation Plan (Task 1010)

1. Work with RIDOT and other partners as necessary, to develop a new State Freight and Passenger Rail Plan that meets the guidelines set forth in the Passenger Rail Investment and Improvement Act (PRIIA). The State Rail Plan will update and integrate pertinent goals, policies, objectives and actions from State Guide Plan Element 661, the State Freight Rail Plan, as well as develop new goals, policies, objectives and actions related to passenger rail. The plan is to be grounded in and connect with the regional rail context. It is planned to include an inventory of existing resources, a prioritization of future rail projects, and all other data and analyses required to meet the criteria outlined in PRIIA. These activities will be undertaken with the assistance of Transportation Advisory Committee, the Technical Committee and a specialized Rail Advisory Committee that connects with regional interests. A consultant will also be engaged to assist with this project. The State Planning Council, in conjunction with staff, will conduct a public review of the Plan, complete the air quality conformity process and adopt the Plan as a portion of the State Guide Plan following a public hearing.
2. Work through the Waterborne Passenger Planning Steering Committee to complete the ongoing update of the pertinent goals, policies, objectives and actions from State Guide Plan Elements 651 (Waterborne Passenger Plan). Integrate these into the Surface Transportation Plan and repeal existing Element 651 as a separate component of the State Guide Plan.

Transportation Improvement Program (Task 1015)

1. Review and process proposed Transportation Improvement Program (TIP) amendments and adjustments.
2. Work with RIDOT and RIPTA on TIP status reporting for FFY 2011.
3. Review the 2003 Memorandum of Understanding between the RI State Planning Council, Department of Transportation and Public Transit Authority regarding procedures to amend and modify the TIP. Propose revisions to the existing MOU that meet federal requirements and maximize public participation but also further streamline and clarify the amendment process. Readopt a revised Memorandum of Understanding.
4. Formulate a timeline and strategy for production of the FY 12-15 TIP. As part of this update, develop a new format for the TIP that conforms to federal regulations for funding categories.
5. Provide an additional level of transparency to the public by publishing an annual separate supplement to the TIP outlining prior year's obligations.

Travel Demand Modeling (Task 1020)

1. Maintain, refine, and enhance the statewide travel demand forecast model. Use transit network and other capabilities for transportation planning. In conjunction with RIDOT, RIPTA, and other agencies, apply model to corridor, and area wide intermodal analyses, congestion management and intelligent transportation planning. Continue staff training and development in use of the model and GIS interface.
2. Utilize the transit component of travel demand model for ridership forecasts, travel corridor plans, and Transit Oriented Development studies.

Air Quality Conformity Analysis (Task 1025)

1. Continue interagency coordination and consultant support required for the air quality conformity process.
2. Coordinate with RIDEM on the transition from the MOBILE model for air quality analyses to the MOVES model for air quality analyses.
3. Work with RIDEM to revise and submit Rule VIII of the rules of procedure, which outlines the process and criteria for State agencies to determine air quality conformity for transportation plans and projects, to the EPA for approval.
4. Pursue educational opportunities for staff as well as Transportation Advisory Committee members relative to air quality conformity concerns, analysis methodologies and review procedures.

Transportation Based Climate Change Activities (Task 1030)

1. Utilize forthcoming LiDAR data to refine the initial sea level rise inundation mapping contained in Transportation 2030. Develop a Technical Paper on sea level rise's potential impact on transportation infrastructure including the identification of specific bridges, road, rail segments, airports and other intermodal facilities that may be impacted by municipality. Develop a strategy for working with stakeholders to identify prioritized mitigation needs.

Congestion Management Task Force (Task 1035)

1. Continue to expand the utility and significance of the Congestion Management Task Force by developing and applying performance measures that will examine alternatives and connect the

congestion management process to long-term planning goals. Measures may include travel delay, levels of service, and vehicle miles traveled.

2. Assess the inclusion of intelligent transportation systems (ITS) in intermodal applications and plans and provide input to development and refinement of state's ITS architecture.
3. Reexamine diversionary routes for interstates and other major highways to be used in the event of an emergency and update as necessary, identifying deficiencies including ITS infrastructure.
4. Support the 2009 Aquidneck Island Regional Traffic Incident Management Challenge Grant Project.

Access Management (Task 1040)

1. Consider reestablishing the Access Management Task Force to advance access management goals within the state.
2. Create a statewide Access Management Program beginning with a pilot program, to be monitored through the congestion management process.
3. Where possible, cooperate with cities and towns to coordinate land use and congestion management planning and strengthen the state's role in access management.
4. Support the 2009 Route 7 and Route 116 Access Management Challenge Grant Project.

State Employee Commuter Task Force (Task 1045)

1. Continue to staff the State Employee Commuter Task Force.
2. Encourage alternatives to the single occupant vehicle such as transit, carpools, vanpools, and bicycle use to help reduce vehicle-miles traveled, conserve energy, improve air quality, and support the economy.
3. Develop a transportation strategy to reduce state employee vehicle miles traveled to meet the goals specified by the General Assembly.

Transit Planning (Task 1050)

1. Continue to support RIPTA in its implementation of the Metro Area Transit Study through technical assistance and funding, where possible.
2. Continue to cooperate with RIPTA and its consultant in developing a public transit strategy for Rhode Island, as recommended by the Special Legislative Commission to Study Transit Service in the State of Rhode Island and the City of Providence's *Transit 2020* Task Force. Strategy will address service improvements, means to maximize funding investments, and connect all forms of transit. Present relevant recommendations for inclusion in state's long-range transportation plan and short term programs, such as the TIP.
3. Assist RIPTA in emergency response planning, transit hub evacuation plan, and alternate transit hub identification. Consider safety and security in planning process.
4. Continue to provide assistance, as resources allow, to interagency planning teams engaged in designing transportation strategies to assist in removing transportation barriers to transitioning clients to meaningful employment (welfare to work).
5. Participate in transit studies and planning activities designed to increase ridership and assure adequate public transportation for the workforce. Provide input and assistance to other transit studies as necessary.

6. As resources allow, continue to participate in RI Department of Education's Statewide Plan for Special Needs Student Transportation and Out of District Student Transportation.
7. Work with RIDOT and RIPTA to explore the feasibility of consolidating FHWA and FTA planning funds, administered by one agency, as a potential mechanism for more fully integrating public transit into regional multimodal systems planning.
8. Continue to work with RIPTA to score and prioritize projects for funding under the Job Access/Reverse Commute Program.
9. Support the 2009 Providence Public Bike Share Challenge Grant Feasibility Study.

Airport Planning (Task 1055)

1. Upon initiation by the Rhode Island Airport Corporation (RIAC), work with RIAC, the host communities and other stakeholders to draft an update of the State *Airport System Plan* Complete review of the draft plan update with the Technical Committee and State Planning Council and adopt as an element of the Guide Plan.

Corridor Planning (Task 1060)

1. In cooperation with RIDOT, RIPTA, regional planning organizations (as applicable), and/or cities and towns, support and monitor the development of detailed corridor level plans. Corridor planning will engage key stakeholders, encompass all modes, and provide for integration of land use and transportation concerns within the process.
2. Continue to participate in and provide data to the Aquidneck Island Planning Commission Transportation Corridor Study. The focus of this ongoing study is to assess the major north-south arterials and key connectors on Aquidneck Island in order to generate prioritized projects that will result in improved efficiency and safety of travel. To date the initial sections of the study including community outreach and involvement, data collection and analysis, and the transportation improvement and integrated scenario alternatives have been completed. Over the next year the critical parts of evaluating these transportation alternatives and integrated scenarios will be undertaken along with the development of specific projects and overall presentation for submittal to the Transportation Advisory Committee.
3. Support the 2009 Metacom Avenue Challenge Grant Corridor Study.
4. Continue to support the Blackstone Valley Partnership, an alliance of municipalities, business interests, elected officials, and environmental and community service groups in Northern Rhode Island and Central Massachusetts, collaborating to coordinate transportation, land use and economic development initiatives among the 24 municipalities in this 2 state region.

Safe Routes to School Program (Tasks 1065/8050)

1. Serve as the State Coordinator and single point of contact for the Safe Routes to School Program. Per Cooperative Agreement with RIDOT maintain a successful Safe Routes to School Program in accordance with SAFETEA-LU requirements and FHWA guidance. Plan, develop, organize, administer and manage the promotion, coordination, and outreach portion of the program. Support a Steering Committee and other committees such as a Project Selection Committee as necessary. Meet regularly with RIDOT staff. Attend training and workshops as needed.
2. Process Round I invoices and maintain records accordingly.
3. Advance Round II of the SRTS program. Work with successful applicants to complete all non-infrastructure agreements and National Course workshops for the second round of projects. Process Round II invoices and maintain records accordingly.

4. Establish a list serve to maintain regular communication with and among participating SRTS award recipients and to advise them of additional resources such as webinars, National SRTS Center publications, etc.
5. Work with RIDOT on strategies to streamline the implementation of SRTS infrastructure projects.

Continuing Transportation Planning Process (Task 1070)

1. Assess various projects, plans, and environmental documents for consistency with transportation elements of the State Guide Plan as needed.
2. Coordinate Regional transportation planning Initiatives through the implementation of the Memorandums of Understanding executed with the Southeastern Regional Planning and Economic Development District and the Central Massachusetts Regional Planning Commission.
3. Continue to participate in and provide support to the, the URI Transportation Center, the T2 Advisory Board, the Highway Safety Planning Committee, the Incident Management Task Force, the Accessible Transportation Advisory Committee, the State Rehabilitation Council's Transportation Consortium, and the RI Emergency Operations Center.
4. Assess SPC rules of procedure for the transportation planning process and update (in conjunction with a small advisory committee or TAC subcommittee) where necessary to ensure compliance with applicable federal transportation legislation.
5. Maintain and update the highway functional classification system, and review any requested amendments with the Technical Committee.
6. Track, assess and provide input in discussions regarding the reauthorization of federal surface transportation legislation.
7. Advance regional and state freight planning studies and activities. Continue to host FHWA freight planning, as well as other freight and transportation webinars.
8. Continue to maintain and upgrade computer equipment, staff training, and software to support transportation planning activities and public outreach program.
9. Work with RIDOT, FRA, FHWA, local communities, and other government agencies and private companies to develop a statewide railroad-highway grade crossing safety program.

Land Use Initiatives

Transfer of Development Rights Initiatives (Task 2010)

1. Facilitate the development of Transfer of Development Rights (TDR) programs within and amongst Rhode Island municipalities as it is a critical tool in achieving the urban rural distinction and village/growth center concepts of Land Use 2025. Coordinate the implementation of ongoing challenge grants concerning TDR. Work with partners to apply results of challenge grants to the development of a statewide TDR framework possibly including a TDR bank, inter-municipal Memorandums of Agreement, and the creation of an approval and review process with a project rating system.

Village and Growth Center Initiatives (Task 2020)

1. Assist communities in planning for compact growth through the local establishment and state approval of village/growth centers. Formulate and begin implementing a participatory strategy for: defining these centers and their benefits within the smart growth context of *Land Use 2025*; exemplifying and depicting rural as well as urban variations; proposing model methodologies for

proper siting, design and development; formalizing procedures for review and approval; and for encouraging implementation

2. Design and publish a guidance document that will serve as a tool for communities to plan for growth centers and to assist in implementation of TDR Programs.

Water Supply Planning (Task 2030)

1. Continue to work with the Water Supply Advisory Committee to develop a comprehensive plan for water resource management, supply and use. The new plan will consolidate the five existing state guide plan elements concerning potable water supply; 715, 721, 722, 723, and 724, as well as applicable portions of 162. Complete review of a new draft plan by advisory committee and the Technical Committee. Upon acceptance and endorsement of draft plan by State Planning Council, conduct public hearing. Potential revision of draft to reflect input from public hearing and obtain State Planning Council final approval. Rescind the five existing State Guide Plan Elements with the final adoption of the consolidated plan. Publish approved plan via website and electronic media.
2. Continue to Serve as a member of the Water Resources Board (WRB). Assist the WRB and the Department of Environmental Management in the development and adoption of a water allocation program and a stream flow depletion program to implement the water supply policies of the State Guide Plan. Review updated Water Supply System Management Plans (WSSMPs) for consistency with the State Guide Plan. Participate in the Drought Steering Committee to insure implementation of the State Guide Plan.
3. Attend conferences, seminars and meetings to stay current with new data, trends and engineering technologies regarding natural resources protection and water supply planning. Participate in state and regional chapters of the American Water Works Association as a means of expanding professional networks and opportunities.

Watershed Planning (Task 2040)

1. Continue to work with the NBEP and the RI BRWCT to develop an integrated plan that addresses overall goals and priorities for the management, preservation, and restoration of the state's bays, rivers, and watersheds, and the sustainable development of Rhode Island's water-reliant economy. Use the Bays, Rivers, and Watersheds Systems-Level Plan: 2009-2013, the Rivers Policy and Classification Plan State Guide Plan 162, the Narragansett Bay Comprehensive Conservation and Management Plan (CCMP) State Guide Plan 715, and the RI Nonpoint Source Management Plan State Guide Plan 731 as foundation documents to create an initial draft plan. Include, where relevant, those goals objectives and recommended actions of other relevant watershed plans. Work with a plan development work group and an advisory committee to develop the IP. Attend stakeholder work group sessions and advisory committee meetings. Assist the working group to revise and expand as necessary the preliminary draft IP for review and final endorsement by the BRCT and the NBEP Management and Policy Committees. Publish approved IP via website and electronic media.
2. Use the approved Integrated Management Plan (IP) from task 1 above to create a new consolidated State Guide Plan Element for estuarine, bay, and watershed policy. Review the draft Element with the Technical Committee and upon acceptance and endorsement by the State Planning Council, conduct a public hearing. Revise draft to reflect input from public hearing and obtain State Planning Council final approval. Rescind the State Guide Plan Elements: 162, 715, and 731 upon final adoption of the new consolidated Element. Publish approved plan via website and electronic media.

3. Continue to participate as a member of the Narragansett Bay Estuary Program Management and Policy Committees, RI BRWCT and the RI Rivers Council. Provide technical support and planning guidance to each group where feasible.

Energy Planning (Task 2050)

1. Continue to work with the State Office of Energy Resources, the Energy Plan Advisory Committee and the Technical Committee to update the State Energy Plan. Upon acceptance and endorsement of the draft plan by the State Planning Council, conduct public hearing for stakeholder input. Revise draft to reflect input from public hearing and obtain State Planning Council final approval. Publish approved plan via website and electronic media. Initiate approved strategies and activities upon approval of plan.
2. Develop siting guidelines for renewable energy facilities as required by 2006 State legislation. Design and publish a document that will serve as a tool for communities to guide the growth and use of alternative energy sources as well as parameters that municipal ordinances should contain for permitting such uses. Address implementation of the updated Energy Plan of task 1 above.
3. Continue to provide technical support related to energy community development block grants and energy policy to the State Energy Office.

Recreation, Conservation and Open Space Planning (Task 2060)

1. Cooperate with the R.I. Department of Environmental Management (DEM) on implementing the State Comprehensive Outdoor Recreation Plan (SCORP) Element 152 of the State Guide Plan, in conjunction with Land Use 2025 objectives and strategies for a statewide greenspace system. Continue to advise DEM and the Coastal Resources Management Council on strategic land acquisitions. Assist DEM with development of guidance for communities and non-profits on innovative and emerging comprehensive planning techniques to expand local and regional greenspace networks to complement the State's land acquisition and protection programs.
2. Participate as a member of the Agricultural Land Preservation Commission in evaluation and selection of projects for purchase of development rights to agriculturally valuable land in the state and maintaining an inventory of agriculturally valuable land.
3. Work with DEM, the Natural Heritage Preservation Commission, Greenways Council, RI Trails Advisory Committee, and the Recreation Resources Review Committee in implementing grant rounds for local recreation, greenways, and open space projects which are consistent with SCORP/LU 2025.

Solid Waste Management Initiatives (Task 2070)

1. Pending reformulation of the Resource Recovery Corporation Board of Commissions and receipt of their Annual Performance reports; engage requisite professional services and oversee execution of a study providing a comprehensive assessment of the economics of solid waste disposal in Rhode Island and providing recommendations for optimizing the long-term viability of the Central Landfill as Rhode Island's predominant waste disposal facility while providing adequate predictability for the Corporation's operating revenue needs and for municipal budgets.

Sustainable Communities Initiatives (Task 2080)

1. Work internally, coordinate with, and or provide technical assistance to interested state agencies, municipalities and other organizations in executing successful applications to the Department of Housing and Urban Development's Sustainable Communities Planning Grant Program. At the time of this writing, potential Rhode Island applicants include RI Housing, The Economic Development

Corporation, the Blackstone Valley Partnership as well as the Statewide Planning Program. The goal being to further implementation of Land Use 2025 by supporting multi-jurisdictional regional planning initiatives that integrate housing, economic development, water supply and transportation decision-making in a manner that empowers jurisdictions to consider the interdependent challenges of economic growth, social equity and environmental impact simultaneously through land use and zoning.

2. Partner with property owners, municipal government, the Economic Development Corporation, Department of Environmental Management, other state agencies and stakeholders to advance the use or reuse of properties that present distinct development opportunities to the state. Produce consensus based master plans for selected focus areas that integrate transportation, environmental, housing and economic development concerns and exemplify the nature of sustainable development called for by Land Use 2025. Work to advance the regulatory review and permitting of these sights by completing site suitability analysis components such as Phase I environmental assessments and state approved wetland delineations.

Other Land Use Planning Activities (Task 2090)

1. Assess various projects, plans, grant applications, proposed legislation, proposals and documents for consistency with pertinent Elements of the State Guide Plan.
2. Initiate update of *Land Use 2025*, State Guide Plan Element 121. Incorporate new goals, policies and implementation actions from the various State Guide Plan updates and consolidation projects; Water Supply Planning (Task 2030)(1), Watershed Planning (Task 2040) (1), and Energy Planning (Task 2050)(1). Incorporate updated information and new goals, policies and strategies where appropriate from RI Agricultural Partnership Strategic Plan for Agriculture.
3. Work with the Department of Environmental Management Office of Forest and Environment to update the Forest Resources Management Plan, State Guide Plan Element 161. Complete review of a new draft plan by State Forest Stewardship Coordinating Committee. Facilitate review by the Technical Committee. Upon acceptance and endorsement of draft plan by State Planning Council, conduct public hearing for stakeholder input. Revise draft to reflect input from public hearing and obtain State Planning Council final approval. Publish approved plan via website and electronic media.
4. Continue to work with the State Planning Council's special Implementation Committee and with other state agencies, partners and stakeholders to promote implementation of *Land Use 2025*. Work to engage the Committee in development of the statewide TDR framework and guidance document for growth centers.
5. In coordination with stakeholders such as Grow Smart Rhode Island and the R. I. Chapter of the American Planning Association, continue to develop and deliver educational programs on *Land Use 2025* that encourage the integration of its goals, objectives and strategies within municipal comprehensive plans and other publicly funded plans and projects.
6. Update the 2001 Composite Municipal Future Land Use Map based upon current community comprehensive future land use plan maps. Use updated map to show measurements of change and impact of Land Use 2025 goals and policies. Use updated map to develop framework for TDR program outlined in task 2010.
7. Participate on other boards and committees to provide a statewide planning perspective. Provide assistance and coordination to other agencies' planning-related activities. Examples include serving on the state's Historical Preservation and Heritage Commission and the Aquidneck Island Planning Commission -- West Side Task Force, State Conservation Commission, Rhode Island Rural Development Council, and the Rhode Island Resource Conservation and Development Council.

8. Continue to provide technical support related to water supply, stormwater, green infrastructure and low impact development policies to suppliers, land trusts, other agencies, and municipalities.
9. Attend conferences, seminars and meetings to stay current with new data, trends and implementation techniques regarding land use planning. Participate in state and regional chapters of the American Planning Association as a means of expanding professional networks and opportunities.

Economic Development / Strategic Planning Initiatives

Economic Development Policies and Plan (Task 3010)

1. Revise the Economic Development Policies and Plan. Update economic analyses and reexamine objectives and policies of the U.S. Economic Development Administration and the R.I. Economic Development Corporation. Draw on resources in and outside of these agencies to conduct independent research as needed. Establish inter-agency working group to provide input and critique draft product. Provide the Technical Committee and State Planning Councils review of drafts, conduct the public review process and adopt the plan as a revision of a standing State Guide Plan element
2. Promote implementation of the Economic Development Policies and Plan by continuing to provide technical assistance and support to cities and towns and to the Rhode Island Economic Development Corporation (RIEDC). Review local economic development plans and projects of the RIEDC for consistency with the Economic Development Policies and Plan.

Comprehensive Economic Development Strategy Administration (Task 3020)

1. Continue to maintain the State's Comprehensive Economic Development Strategy (CEDS) and Project Priority List (PPL).
2. Ensure that the state's criteria for nominating projects to the PPL closely correspond with EDA's criteria for funding, through an ongoing performance evaluation of past and present CEDS projects.
3. Conduct the annual CEDS project solicitations and provide technical support and assistance in the preparation of CEDS applications.
4. Produce the CEDS annual Report
5. Serve as advisor to the State's Enterprise Zone Council and represent the Division of Planning in state, regional and local economic development initiatives and related activities such as the advisory council of the EDA-funded Rhode Island Center for Nursing Excellence.

Strategic Planning and Other Policy Initiatives (Task 3030)

1. Conduct research and policy analysis on issues that cut across established agency areas of responsibility.
2. Carry out short-term planning studies to analyze emerging issues, as requested by the Associate Director of the Division of Planning, the Director of Administration and the Governor's Office.

Consistency Review and Planning Assistance

State Guide Plan Maintenance (Task 4010)

1. Update State Guide Plan Element 110: Goals and Policies and disseminate via electronic and print media. Research Rhode Island General Laws for legislatively mandated goals and policies. Solicit

State agencies for suggested goals and policies. Draft and submit to State Planning Council for review and approval.

2. Implement the recommendations found under Issue 6, “Reforming the State Guide Plan” of Rhode Island Comprehensive Community Planning System Assessment and Recommendations, An Implementation Report for Land Use 2025: Rhode Island’s Land Use Policies and Plan. These recommendations fall into two broad categories, 1) present to the State Planning Council / Legislature recommendations for the repeal of outdated or irrelevant State Guide Plan elements and, 2) as opportunities and resources allow, consolidate related State Guide Plan elements.
3. Update the State Guide Plan Overview as necessary and maintain on the DoP website. The Overview may be discontinued with the adoption of the new Goals and Policies element.

Comprehensive Planning Program (Task 4020)

1. Administer the State Comprehensive Planning and Land Use Regulation Program as mandated by R.I.G.L. 45-22.2 (The Act). Expeditiously review formal comprehensive plan submittals, amendments and five-year updates against the directives established by, and within the procedural requirements of the Act.
2. Work through the Comprehensive Planning System to embed state transportation, land use, housing, economic development as well as other functional area goals into local policy. Facilitate the resolution of identified concerns through direct interaction with applicable state, local, and public stakeholders.
3. Work with the State Planning Council to adopt new rules and regulations governing the Comprehensive Planning System and implement the recommendations of Rhode Island Comprehensive Community Planning System Assessment and Recommendations, An Implementation Report for Land Use 2025: Rhode Island’s Land Use Policies and Plan.
4. Update Handbook 16: *Handbook on the Local Comprehensive Plan* to reflect recent updates of the State Guide Plan and the outcomes of efforts to implement the recommendations of the Comprehensive Plan Assessment Process described above. Conduct additional outreach to the affected constituencies.
5. Encourage State agency participation in the comprehensive planning process and improve implementation of the Comprehensive Planning and Land Use Regulation Act by opening clearer communication channels and feedback loops amongst state agency reviewers, Program staff and local planners; and by demonstrating the positive benefits that can be realized through their participation.
6. Reach out to municipalities that do not currently have state approved community comprehensive plans to identify if opportunities exist to provide targeted assistance in resolving pertinent impediments.
7. Continue to streamline the comprehensive planning process and improve its effectiveness in coordinating development patterns by providing technical assistance and advisory input to municipalities during the local drafting and development stage. Advise applicable municipalities of the opportunity to engage the Program in the drafting and approval process, assign dedicated staff liaisons accordingly and fulfill municipal needs to the greatest extent practicable.
8. Facilitate public access to municipal comprehensive plans by continuing to improve the availability of local documents on the Statewide Planning website.
9. Coordinate with RIGIS to enhance web-based GIS capabilities to facilitate staff utilization of GIS in plan reviews.

10. Coordinate with and provide technical support to the RI Department of Health in implementing their “Integrating Active Living into Community Policies” project. The project will be a three year effort supported by the hire of a new full time planner position within the DOH who will work closely with the Division of Planning in implementing the grant. The goal of the grant is to identify standards, policies, methodologies and other tools that communities can integrate into their comprehensive planning process to increase the level of physical activity of its residents.

Intergovernmental Review Process (Task 4030)

1. Review federal grant and loan applications, direct federal development and other actions, environmental impact statements, and other federally assisted actions to assure consistency with state and local plans. Coordinate review of projects of the RI Economic Development Corporation (and its subsidiaries) for consistency with applicable plans.

Energy Facility Siting Board Review (Task 4040)

1. Review applications for energy facilities, including power plants, substations, power lines, storage and transport facilities, and other structures subject to Board review, for consistency with the State Guide Plan and impacts on the socioeconomic fabric of the state. This is done on a case-by-case, as-needed basis.

Local / Legislative Planning Assistance (Task 4050)

1. Continue providing support to the program of training coordinated by GrowSmart Rhode Island for local community boards and commissions, and cooperate in developing publications or other means to institutionalize the guidance developed through these programs.
2. Provide quality, technical assistance to citizens, groups, and government agencies on local planning and land use issues.
3. Monitor and provide input on legislative changes to State planning and development enabling acts, and other legislation as requested.

Planning Challenge Grant Program (Task 4060)

1. Support the 2009-10 grant recipients as they work to implement their grants in accordance with the signed cooperative agreements.
2. Monitor grant recipient project progress through quarterly reporting and reimburse funding to grant recipients as necessary through processing of reimbursement requests.
3. Solicit projects for the 2010-2011 grant round. Work through the Challenge Grant Program Review Committee to select grant recipients and execute cooperative agreements.
4. As resources allow, entertain new proposals for small grants to assist local or regional planning projects and qualified *planning-related* research projects that support implementation of the State Guide Plan’s transportation and land use elements.

Planning Information and Resource Initiatives

Rhode Island Geographic Information System (Task 5010)

1. Support the Executive Committee in leading the RIGIS effort as mandated by RIGL 42-11-10. Undertake routine administrative tasks associated with the Executive Committee’s quarterly meetings. Produce a FY2010 Annual Report. Update the Executive Committee’s Strategic Plan for 2010-2015.

2. Ensure that the State's GIS users are maximizing available computer resources. Integrate state agency GIS resources into an overall enterprise-wide GIS. Begin by setting up space on an existing RIDOT GIS server for replication of the RIGIS database and RIDOA use. Improve web-based GIS capabilities to ease the use of RIGIS data. Determine how to best use the RI Digital Atlas to support municipal Comprehensive Plan development mapping needs
3. Continue to support the maintenance and enhancement of the RIGIS database in cooperation with the University of Rhode Island Environmental Data Center (EDC) and ensure the availability of data within the public sector and to the citizenry of Rhode Island as mandated by RIGLs 42-11-10 and 16-32-30. Renew annual funding agreement with EDC for the same.
4. As final versions become available, incorporate broadband mapping products from RIEDC into the RIGIS database. Initiate production of a composite municipal future land use map. Assist staff with GIS analysis such as that proposed for the impact of sea level rise on transportation infrastructure using LiDAR data products as they become available (see Item #6). Incorporate analysis data products in the RIGIS database where appropriate.
5. Provide leadership to state agencies in the coordinated development, dissemination, integration and utilization of GIS data. Examples include tasks associated with the Emergency Management Agency's Support Function V; the E-911 system's Pictometry, aerial photography and site address and road centerline data maintenance; the Water Resources Board's municipal water distribution infrastructure data; the Governor's Office ARRA fund mapping; and the State of Rhode Island real property dataset, as well as other new opportunities.
6. Work with URI, RIDOT and other interested RI funding partners to develop a contracting mechanism with the USGS for a coastal New England LiDAR-based elevation data set to be captured during the Fall of 2010. LiDAR (Light Detection and Ranging) uses a laser beam to measure the vertical height of the landscape yielding data with accuracy far beyond what is currently available. Anticipating delivery in Spring 2011, use derived products from this new data to support transportation, environmental and emergency management planning efforts related to sea level rise, hurricanes, coastal storms, flooding and storm damage.
7. Provide technical assistance to municipalities in the coordinated development, dissemination, integration and utilization of GIS data. Create a standardized set of GIS map layers, and a standard map design to support Comprehensive Plan development efforts. Create a list of adopted and draft Federal GIS data layer standards. Update existing and create new RIGIS data layer standards to follow Federal standards. Conduct a study assessing the conformance of currently-available municipal data with updated RIGIS standards. Provide recommendations toward future actions in the development of a seamless statewide municipal database.
8. Continue the overall effort to publicize the availability of GIS assistance and guidance to state agencies, municipal government, and local schools through liaison efforts and outreach programs to stimulate implementation and the use of geographic information systems in cooperation with the URI EDC.
9. Attend conferences, seminars and meetings to better understand how RIGIS can incorporate new technology, applications, and database developments. Renew memberships and participate in regional chapters of the National States Geographic Information Council (NSGIC), the Urban and Regional Information Systems Association (URISA), and the NorthEast ARC (NEARC) GIS user group as a means of expanding professional networks and opportunities.
10. Add geospatial service provider purchasing capabilities to the existing State of Rhode Island Master Purchase Agreement (MPA) 230. Renew existing MPA 183 with ESRI for their software and services.

Demographic and Socioeconomic Data (Task 5020)

1. Revise and update all data products currently available on Statewide Planning's census webpage to incorporate data from the 2010 decennial census. Redraw census tract maps for all communities to align with changes made to conform with revised population and housing unit thresholds mandated by the Participant Statistical Areas Program.
2. Conduct original statistical research and analysis, prepare custom products and tabulations from Census Summary Files, and provide demographic, social, economic, and housing reports, as requested, for State and local governmental entities, community agencies, business enterprises, educational institutions, and the general public.
3. Continue operations as lead agency of the State Data Center (SDC), the principal point of contact with the U. S. Census Bureau and organizational manager of the network of Coordinating and Affiliate agencies. Act as the statewide agent for the distribution of census materials to SDC agencies and other interested parties. Maintain a publicly accessible library of census materials, including CD-ROMs, DVDs, published reports, maps, etc. Update Statewide Planning's Census web page with the inclusion of data from the American Community Survey (ACS).
4. Conduct annual survey of Group Quarters populations by facility, and submit completed report to the Federal/State Cooperative for Population Estimates, U.S. Census Bureau.
5. Compile vital statistics data from records on file with the Department of Health and submit a detailed report of births and deaths by race and ethnicity, by county, to the Population Estimates Division of the U.S. Census Bureau.
6. Complete annual report documenting census related activities conducted by member agencies of the Rhode Island State Data Center. Submit completed report to the Customer Liaison Office of the U.S. Census Bureau.
7. Assist the Geography Division of the U.S. Census Bureau in the annual proceedings for completion of the Boundary and Annexation Survey (BAS). The BAS is used to update information about the legal boundaries of all governmental units within the state. The Census Bureau uses the BAS information to tabulate data for decennial censuses and intercensal surveys.
8. Continue to develop monograph reports of each city and town identifying the characteristics of their populations and housing infrastructure. The data will be presented with text identifying the ranking of each community within the state. Information from the last three decennial censuses will be introduced to extract a trend analysis of the individual data sets. Utilize GIS mapping to graphically portray selected data. Community profiles will be uploaded to the Statewide Planning website.

Publications, Archives Maintenance and Access Provision (Task 5030)

1. Manage and update the Division of Planning website as a means for providing efficient public access to planning publications; informational resources; committee memberships, schedules, agendas and minutes; and staff contact information.
2. Manage Committee postings within the Department of Administration building at One Capitol Hill and on the Secretary of State website in accordance with the Open Meetings and Access to Public Records laws.
3. Assist staff in the design, layout, formatting, printing and distribution of publications and other graphical products.
4. Maintain the Program's electronic and paper copy archives of publications and personal computer files.

5. Manage the State's multi-year inventory of aerial photography, and provide controlled loan access to public and private organizations and individuals to such images for out of house duplication.
6. Complete preservation strategies and efforts to properly archive and safeguard deteriorating original historic aerial photographs and other reference materials dating back to 1938.

Support to Other Agencies

ARRA Implementation and Administration (Task 6010)

1. Assist state agencies and the Governor's Office of Economic Recovery and Reinvestment in implementing the American Recovery and Reinvestment Act (ARRA). Review projects as requested for consistency with Transportation 2030, Land Use 2025 and the State Guide Plan in general. Provide staff support in completion of reporting and mapping requirements associated FHWA and FTA ARRA funds.

State Properties Management (Task 6020)

1. Oversee the Division of Central Services state properties management function and participate on the State Properties Committee. Review proposed transactions affecting state-owned/managed properties for consistency with the State Guide Plan and coordination with other applicable plans and programs.
2. Assist the Divisions of Accounts and Controls and Properties/Management in the development and maintenance of a state properties and buildings data set that includes a GIS access capability.

Housing Program Support (Task 6030)

1. Work with GrowSmart RI, Rhode Island Housing, the housing Resources Commission and other partners in providing technical assistance to communities in support of implementation of local affordable housing plans through inclusionary zoning techniques and related land management practices, design, and financing.
2. Act as the clearinghouse for the annual certification process of the Keys Amendment [Section 1616(e) of the Social Security Act] by publicizing, and making available for public review, standards of enforcement procedures developed by RIMHRH and RIDOH.

Community Development Program Support (Task 6040)

1. Assist in the operation of the Community Development Block Grant (CDBG) Program including program reporting mechanisms, review and analysis of annual CDBG applications, and administrative support including budgeting, mailings and copying.

RIEMA Planning and Management Support (Task 6050)

1. Under the State Emergency Management Plan's Emergency Support Function 5, the GIS manager at the Division of Planning is responsible for coordinating the GIS support effort for the Emergency Operations Center at RIEMA in times of emergency. The RIGIS Coordinator within the Division will maintain a database of trained GIS staff at the RI Departments of Administration, Environmental Management, Health, Transportation, and at the University of Rhode Island available for responding to RIEMA requests for assistance. Senior staff and technical staff will support planning and data needs of the Emergency Management Agency as needed, including mapping, consultation and capacity development.

Management and Administration (Task 7010)

1. Direct agency activities. Carry out administrative functions, including financial administration, personnel management, time tracking reporting, scheduling and public relations. Maintain and execute Memorandums of Understanding with external agencies for all cooperative development or updating of State Guide Plan elements.
2. Continue hiring activities to achieve the staffing levels authorized under approved budgets. Post vacant positions, select candidates, and interview, assess and hire in coordination with the Department of Administration's Office of Human Resources and Personnel.
3. Staff the State Planning Council/MPO, Technical Committee, Transportation Advisory Committee and all pertinent subcommittees. Arrange meetings; prepare agendas, minutes, and meeting materials; and perform other administrative functions.
4. Complete quarterly reporting requirements of the Federal Highway and Transit Administrations. Separate reports to be submitted in October of 2010 covering the period from July 2010 through September 2010; January of 2011 for the period of October through December; and May of 2011 for the period March through April. Quarterly reporting for the period of April 2011 through June 2011 shall be accomplished through submittal of the 2012 Unified Transportation Work Program.

PART FOUR: RESOURCES

The resources needed to carry out the work program are funding and staff.

Sources of Funding

The following estimates of federal and other non-state funds are assumed to be available in FY 2011 to support the work program. In most cases, a state match share is required. These amounts are subject to change. The remaining funds will be from state appropriations.

- | | |
|---|-------------|
| 1. <u>Federal Highway Administration</u> (FHWA) Metropolitan Planning (PL) fund projected balance as of July 1, 2010 based on unexpended and anticipated grants. | \$4,272,528 |
| 2. <u>Federal Transit Administration</u> (FTA) Metropolitan Planning (5303) fund projected balance as of July 1, 2010 based on unexpended and anticipated grants. | \$811,992 |
| 3. <u>Economic Development Administration</u> (EDA) fund projected balance as of July 1, 2010 based on unexpended and anticipated grants. | \$125,000 |
| 4. <u>Energy Facility Siting Board</u> (EFSB) funds anticipated to be reimbursed by applicants (RIGL 42-98-17). | \$TBD |

Staff

Division of Planning Staff responsible for completing the work program are as follows:

Associate Director's Office

Associate Director	Kevin Flynn
Executive Assistant	Dawn Vittorioso
Executive Secretary	Holly Rhodes

Statewide Planning Program

Chief	Jared L. Rhodes, II
Assistant Chief	Vacant

Transportation Planning Section

Supervising Planner	Karen Scott (Acting)
Principal Planner	Walter A. Slocomb
Principal Planner	Michael Moan
Principal Research Technician	Vincent Flood
Principal Planner	Ronnie Sirota

Demographic and Geographic Data Center

Supervising Planner	Vacant
GIS Coordinator	Shane White
Principal Planner	Mark G. Brown
GIS Technician	Christina Delage-Baza

Land Use Planning Section

Supervising Planner
Principal Environmental Planner
Senior Planner

Nancy Hess
Vacant
Paul Gonsalves

Comprehensive Planning and Consistency Reviews Section

Supervising Planner
Principal Planner
Principal Planner
Senior Planner

Kevin Nelson
Derwent J. Riding
Vacant
Benny Bergantino

Support Staff

Principal Accountant
Information Services Technician II

Paul Capotosto
Kim A. Gelfuso

Strategic Planning & Economic Development Program

Chief
Principal Accountant

Robert Griffith, Ph.D.
William McKenna

Funding By Task

The following table shows projected expenditures by task and funding source.

Table 4-1

WORK PROGRAM FY 11

TOTAL COST BY TASK NUMBER AND FUNDING SOURCE

05/19/10 8:26

TASK NUMBER AND TITLE	TOTAL	SPP COST	FTA	EDA	FHWA	RI AIR QUALITY	SRTS	FSB	OHCD
7010 MANAGEMENT AND ADMINISTRATION	214,686	68,982	27,336	7,028	105,674		8,680	1,860	6,125
8010 PAID LEAVE	381,546	93,917	53,030	14,074	189,149		17,385	3,725	10,266
1010 SURFACE TRANSPORTATION PLAN	70,557	14,111	11,289		45,157				
1015 TRANSPORTATION IMPROVEMENT PROGRAM (TIP)	25,531	5,106	4,085		16,340				
1020 TRAVEL DEMAND MODELING	12,182	2,436	1,949		7,797				
1025 AIR QUALITY CONFORMITY ANALYSIS	12,144	2,429	9,715						
1030 TRANSPORTATION BASED CLIMATE CHANGE ACTIVITIES	24,788	4,957	3,968		15,865				
1035 CONGESTION MANAGEMENT TASK FORCE	32,383	6,477	5,181		20,725				
1040 ACCESS MANAGEMENT	44,680	8,936			35,744				
1045 STATE EMPLOYEE COMMUTER TASK FORCE	41,416	8,283			33,133				
1050 TRANSIT PLANNING	32,661	6,532	5,226		20,903				
1055 AIRPORT PLANNING	17,713	3,543	2,834		11,336				
1060 CORRIDOR PLANNING	19,830	3,966	3,173		12,691				
1065 SAFE ROUTES TO SCHOOL PROGRAM	10,070	2,015	1,611		6,444				
1070 CONTINUING TRANSPORTATION PLANNING PROCESS	37,834	7,568	6,053		24,213				
2010 TRANSFER OF DEVELOPMENT RIGHTS	30,801	6,160	4,928		19,713				
2020 VILLAGE AND GROWTH CENTERS	73,381	14,677	11,741		46,963				
2030 WATER SUPPLY PLANNING	41,748	8,349	6,680		26,719				
2040 WATERSHED PLANNING	34,357	6,872	5,497		21,988				
2050 ENERGY PLANNING	38,479	19,239		19,240					
2060 RECREATION, CONSERVATION & OPEN SPACE PLANNING	8,606	3,441	861		4,304				
2070 SOLID WASTE MANAGEMENT PLANNING	8,191	2,457	819		4,915				
2080 SUSTAINABLE COMMUNITIES INITIATIVES	94,724	18,944	37,890		37,890				
2090 OTHER LAND USE PLANNING ACTIVITIES	48,459	9,692	7,754		31,013				
3010 ECONOMIC DEVELOPMENT POLICIES AND PLAN	70,501	35,250		35,251					
3020 CEDS ADMINISTRATION	43,937	21,968		21,969					
3030 STRATEGIC PLANNING & OTHER POLICY ACTIVITIES	141,321	42,396	21,198		77,727				
4010 STATE GUIDE PLAN MAINTENANCE	26,260	6,663	3,937		15,760				
4020 COMPREHENSIVE PLANNING PROGRAM	154,908	30,981	24,786		99,142				
4030 INTERGOVERNMENTAL REVIEW PROCESS	52,396	10,480	8,383		33,533				
4040 ENERGY FACILITY SITING BOARD REVIEW	31,765							31,765	
4060 LOCAL / LEGISLATIVE PLANNING ASSISTANCE	122,467	24,493	18,370		79,604				
4060 PLANNING CHALLENGE GRANT PROGRAM	32,524	6,504			26,020				
5010 RHODE ISLAND GEOGRAPHIC INFORMATION SYSTEMS	184,478	36,896	29,516		118,066				
5020 DEMOGRAPHIC & SOCIOECONOMIC DATA	131,217	26,243	20,995		83,979				
5030 ARCHIVES MAINTENANCE AND ACCESS PROVISION	99,032	39,612	9,903		49,517				
6010 ARRA IMPLEMENTATION & MANAGEMENT	7,096	1,420	1,136		4,541				
6020 STATE PROPERTIES MANAGEMENT	151,411	46,423	15,141		90,847				
6030 HOUSING PLANNING SUPPORT	31,504	9,462	3,160		18,902				
6040 COMMUNITY DEVELOPMENT PROGRAM SUPPORT	49,538	9,907							39,631
6060 RIEMA PLANNING & MANAGEMENT SUPPORT	4,306		861		3,445				
8020 CENTRAL BUSINESS OFFICE	17,789				17,789				
8030 FHWA AND FTA AIR QUALITY CONTROL									
8040 RI AIR QUALITY CONTROL	10,000					10,000			
8060 SAFE ROUTES TO SCHOOL - GRANT	83,748						83,748		
8060 DOIT COST ALLOCATION / RIGIS									
SUB TOTAL	2,802,854	666,677	368,992	97,562	1,457,438	10,000	109,813	37,350	55,022
CONTRACTUAL AND PASS THRU GRANTS									
CONTRACTUAL LAND USE IMPLEMENTATION	60,000				60,000				
CONTRACTUAL RAIL PLANNING	100,000		40,000		60,000				
SAFE ROUTES TO SCHOOL	2,000,000						2,000,000		
PLANNING CHALLENGE (PASS THRU)	1,100,000		100,000		1,000,000				
SUB TOTAL	3,260,000	0	140,000	0	1,120,000	0	2,000,000	0	0
TOTAL	6,062,854	666,677	508,992	97,562	2,577,438	10,000	2,109,813	37,350	55,022

Appendix I

RIDOT PLANNING TASKS **FOR THE UNIFIED TRANSPORTATION PLANNING WORK PROGRAM**

**RHODE ISLAND DEPARTMENT OF TRANSPORTATION
SPR-PL 3(32) WORK PROGRAM**

TASK	DESCRIPTION	AUTHORIZATION			
		<u>YEAR I (2010)</u>	<u>YEAR II (2011)</u>	<u>TOTAL</u>	<u>FED SHARE</u>
0101	Administration	\$285,000	\$285,000	\$570,000	\$456,000
0201	Road Inventory	\$297,000	\$300,000	\$597,000	\$477,600
0301	GIS/Mapping	\$530,000	\$525,000	\$1,055,000	\$844,000
0401	Traffic Congestion	\$1,075,500	\$1,100,000	\$2,175,500	\$1,740,400
0501	Highway Statistics	\$50,000	\$25,000	\$75,000	\$60,000
0601	Trans. Plan., Studies, Coord. and Asst.	\$300,000	\$450,000	\$750,000	\$600,000
0602	Environmental Programs	\$484,000	\$450,000	\$934,000	\$747,200
0702	Fiscal and Project Programming	\$300,000	\$300,000	\$600,000	\$480,000
0705	Cooperative Education	\$650,000	\$650,000	\$1,300,000	\$1,040,000
0801	Public Transit Planning	\$50,000	\$35,000	\$85,000	\$68,000
0804	Bicycle and Pedestrian Activities	\$85,000	\$80,000	\$165,000	\$132,000
0901	Management and Monitoring Systems	\$1,435,000	\$1,550,000	\$2,985,000	\$2,388,000
TOTAL		\$5,541,500	\$5,750,000	\$11,291,500	\$9,033,200
0802	Statewide Planning	\$3,132,547	\$2,587,438	\$5,719,985	\$5,719,985
	Note: Task 0802 Federal Funds only.				
	Year I - Additional match of \$445,637 provided by Administration/Planning				
	Year I - Includes \$1,350,000 pass-through/contractual grants to be matched by recipient entities.				
	Year II - Additional match of \$366,860 provided by Administration/Planning				
	Year II - Includes \$1,120,000 pass-through/contractual grants to be matched by recipient entities.				
<u>FTA</u>					
5304	SCCR Phase II Planning	\$10,000	\$250,000	\$260,000	\$208,000
	Transit/Rail Non-Federal	\$12,500	\$12,500	\$25,000	\$25,000
<u>FRA</u>					
ARRA	Preliminary Engineering		\$500,000	\$500,000	\$500,000
	Study/Env Assessment for Track and Platform Upgrades at Kingston Station				

Prepared April, 2010

Appendix II

RIPTA PLANNING TASKS **FOR THE UNIFIED TRANSPORTATION PLANNING WORK PROGRAM**

**Rhode Island Public Transit Authority
Unified Planning Work Program, FY2011**

RIPTA’s planning program for FY 2011 will address short and long range transportation planning concerns, including the on-going activities of maintenance of transit operating statistics, review of existing transit operations and the need for capital investments, design of transit operations to address available funding levels, new demand and new markets, coordination with outside agencies that have interests in Rhode Island’s transportation system or in the transit needs of groups of people, collaboration on continued development of coordinated transit plans for public transit human service transportation, and improving the effectiveness and efficiency of RIPTA’s operations. RIPTA will also incorporate planning needs identified the Strategic Planning Committee of the RIPTA Board. RIPTA will use staff to accomplish these tasks; staff work will be supplemented with outside consultants as needed.

	<u>Federal Share</u>	<u>Total</u>
<u>Program Support</u>	\$164,000	\$205,000
Program Management: This program element will include staff support and interagency coordination meetings. RIPTA’s Planning Department will continue expanded activities to collect, validate, and analyze the additional data collected by these resources, while maintaining the on-going collection and analysis of transit data and business and demographic information.		
<u>Long Range Transportation Planning</u>	\$380,000	\$475,000
RIPTA will provide on-going review and support of long-term transit strategies and investments in transit and a long-range study of the role of transit in Rhode Island. Planned studies include completion of the Alternative Analysis/Environmental Assessment, regional transit corridor studies of Washington County and the Blackstone River Valley. RIPTA will also initiate a statewide transit service plan and a review and prioritization of park and ride facilities.		
<u>Short Range Transportation Planning</u>	\$320,000	\$400,000
RIPTA will maintain ongoing support statistics, review and plan route adjustments, coordinate transit operations with transit planning, study RIPTA management activities, track and evaluate new transit markets and opportunities and coordinate transit operations planning with our transit users and partners. RIPTA will increase its planning activities in working with human services agencies to identify efficient and effective options for meeting the transportation needs of their clients. RIPTA will also perform management studies of critical transit support functions, such as financial planning and budgeting, methods for communicating with passengers, management and efficiency of the RIDE paratransit brokerage, and other plans that can improve transit operations.		
<u>Transportation Improvement Program</u>	\$16,000	\$20,000
RIPTA will participate in Rhode Island’s Transportation planning process with a major focus on the Transportation Advisory Committee and the TIP.		
<u>RIPTA Unified Planning Work Program</u>	<u>\$ 880,000</u>	<u>\$ 1,100,000</u>

Appendix III

UNITED STATES DEPARTMENT OF TRANSPORTATION
APPROVALS



**U.S. Department
of Transportation**

Federal Transit Administration
Region I
55 Broadway Suite 920
Cambridge, MA 02142-1093
(617) 494-2055
(617) 494-2865 (fax)

Federal Highway Administration
Rhode Island Division
380 Westminster Mall, Rm 547
Providence, RI 02903
(401) 528-4541
(401) 528-4542 (fax)

June 30, 2010

Mr. Jared L. Rhodes, II, Secretary
State Planning Council
Statewide Planning Program
Rhode Island Department of Administration
One Capitol Hill
Providence, Rhode Island 02903

Dear Mr. Rhodes:

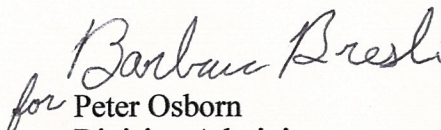
Subject: *Approval of Unified Planning Work Program for Fiscal Year 2011*

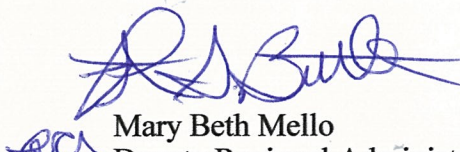
The Federal Highway Administration (FHWA) and the Federal Transit Administration (FTA) have reviewed the Unified Planning Work Program (UPWP) for State Fiscal Year 2011 as adopted by the State Planning Council on June 10, 2010.

Based upon our review, FHWA and FTA find the proposed UPWP to be consistent with the requirements of 23 CFR 450.308 and FHWA and FTA policy initiatives. The programmed activities are approved for the expenditure of PL funds and for FTA planning and grant purposes to June 30, 2011.

If there are any questions regarding this action, please contact us.

Sincerely,


for Peter Osborn
Division Administrator
Federal Highway Administration


Mary Beth Mello
Deputy Regional Administrator
Federal Transit Administration

cc:

Mr. Michael P Lewis, Director - RIDOT
Mr. Al Moscola, General Manager - RIPTA
Mr. W. Michael Sullivan, Director - RIDEM

